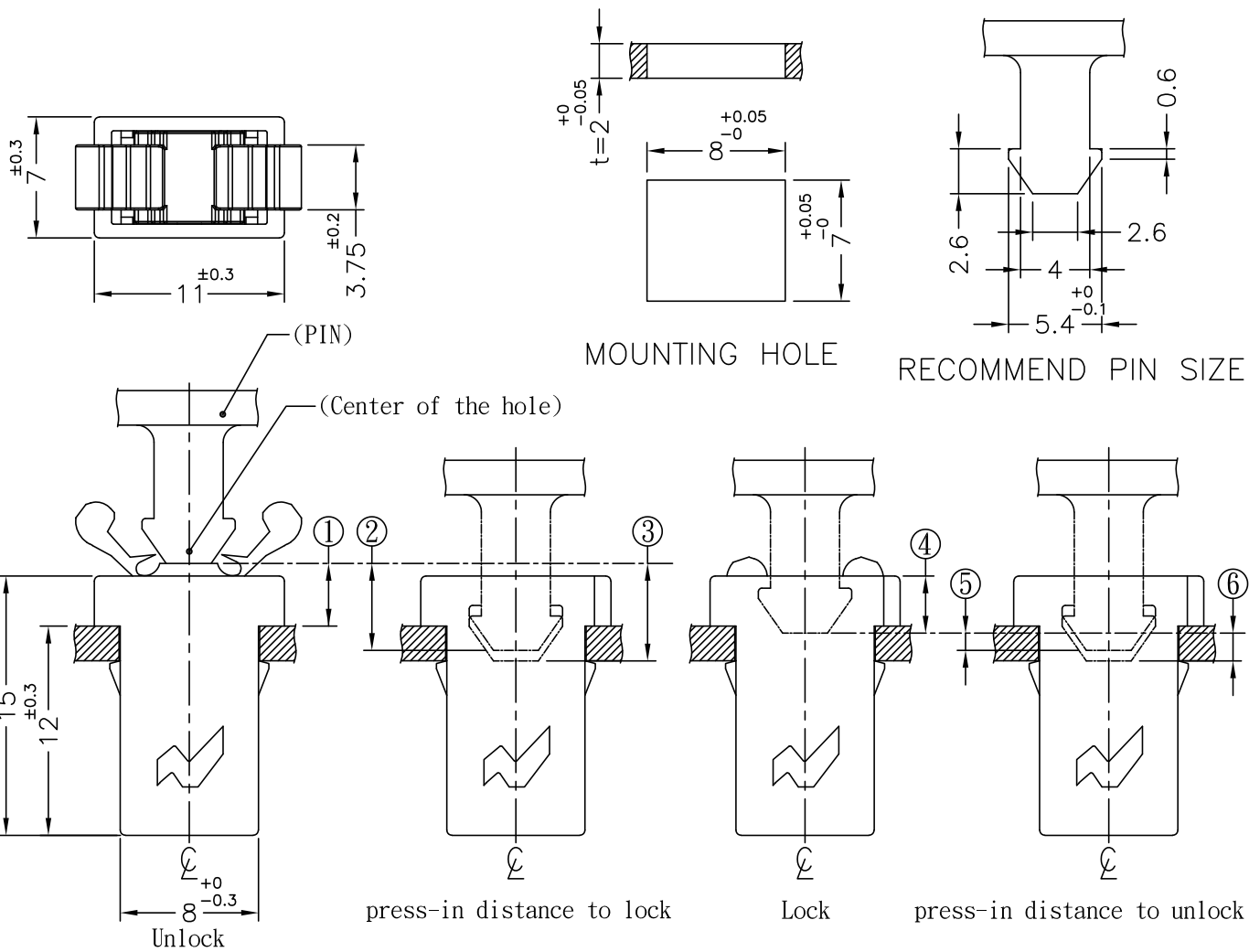


REVISIONS			
REV	DESCRIPTION	DATE	BY



Note: 1. Door lock finished dimensions Location

- ① Unlock position: 4.1^{REF.}
- ② Minimum press-in distance to lock: 5.6^{REF.}
- ③ Maximum press-in distance to lock: 6.1^{REF.}
- ④ Lock up position: 3.3^{REF.}
- ⑤ Minimum press-in distance to unlock: 1.2^{REF.}
- ⑥ Maximum press-in distance to unlock: 1.7^{REF.}

CATCHER MATERIAL	PA 66 V2 (UL94)
CASE MATERIAL	POM
SPRING MATERIAL	SUS 304 WPB



fastpoint		TITLE	PUSH-PUSH	DATE	12/07/2019
		MATERIAL	SEE ABOVE	DRAWN	R.F.
PART NUMBER		DRAWING NUMBER	COLOR	CHECK	APPROVED
6500HA01PS		19.07.12.6500.0.E	BLACK		
SIZE	SCALE	UNIT	REV	UNLESS OTHERWISE SPECIFIED TOLERANCE	
A4	2:1	mm	A	SEE ABOVE	