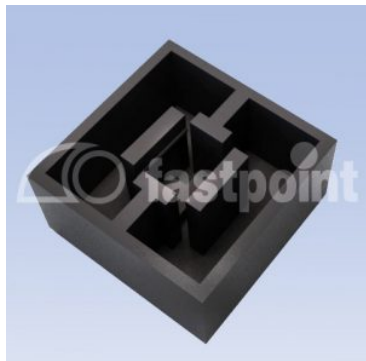


TAPPO PER TACT SWITCH



Descrizione tecnica

Materiale: ABS

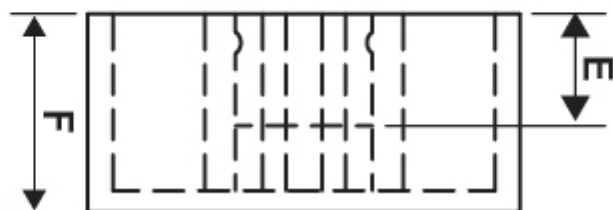
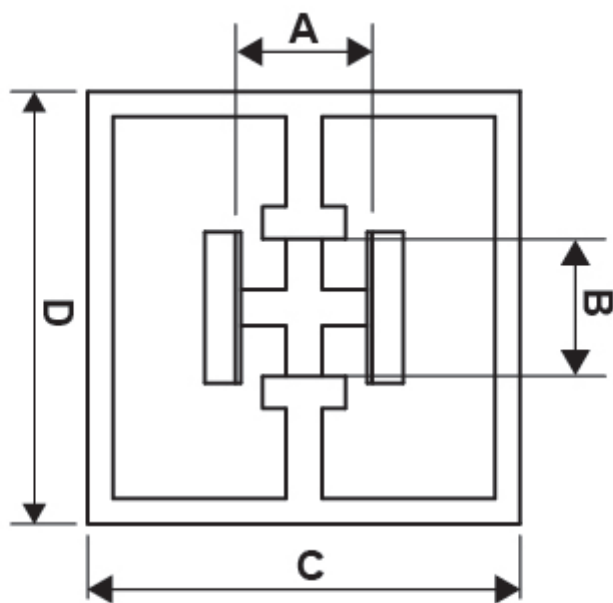
Colore: nero

Autoestinguenza: HB (UL94)

Temperatura d'esercizio:

-30°C ~ +90°C

Tutte le quote sono in mm



Codice	A	B	C	D	E	F	Conf./pezzi
5655HA01	3,8	3,8	12,0	12,0	3,1	55,0	1.000