

TAPPI PER CHIUSURA FORI PASSACAVI



Descrizione tecnica

Materiale: PA 6 30% CV

Temperatura d'esercizio:

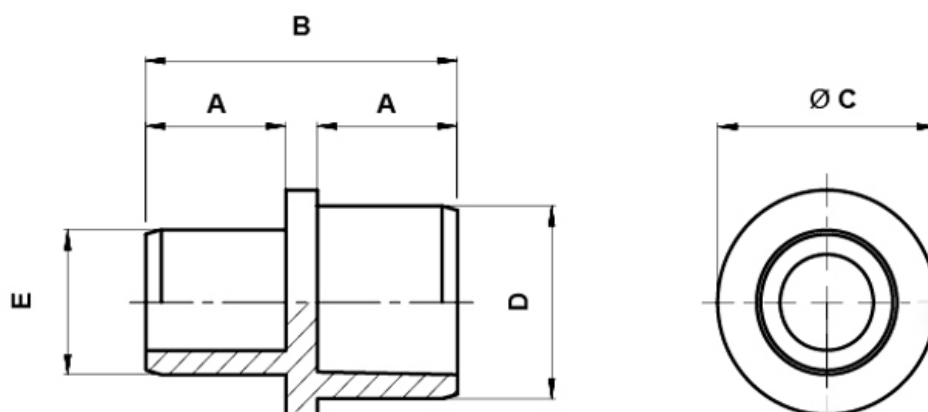
-30°C ~ +100° C

Autoestinguenza : HB (UL94)

Colore: Vedi tabella

Colori: RAL 7001 disponibile su richiesta speciale

Tutte le quote sono in mm



Codice	A	B	C	D	E	Colore	Conf./pezzi
8897BB117035	6,0	14,0	8,5	6,5	5,0	RAL 7035	50
8898BB019005	6,0	14,0	8,5	6,5	5,0	RAL 9005	50
8898BB117035	7,0	16,0	10,0	8,0	6,0	RAL 7035	50
8899BB019005	7,0	16,0	10,0	8,0	6,0	RAL 9005	50

Codice	A	B	C	D	E	Colore	Conf./pezzi
8899BB117035	8,0	18,0	12,0	10,0	7,0	RAL 7035	50
8900BB019005	8,0	18,0	12,0	10,0	7,0	RAL 9005	50
8900BB117035	9,0	20,0	14,0	12,0	9,0	RAL 7035	50
8901BB117035	10,0	22,5	16,0	14,0	12,0	RAL 7035	50
8902BB117035	12,0	26,5	20,0	18,0	16,0	RAL 7035	25
8903BB117035	14,0	30,5	28,0	25,0	20,0	RAL 7035	10