

TAPPI A LAMELLE ROTONDI



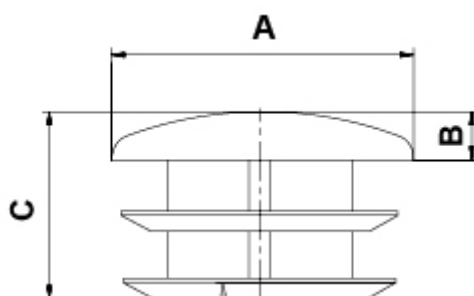
Descrizione tecnica

Materiale: Polietilene LD-PE

Colore: nero

Temperatura d' esercizio: -30°C ~ +70°C

Tutte le quote sono in mm



Codice	A	B	C	Conf./pezzi
3410EA01	10,0	2,0	10,5	2.500
3411EA01	12,0	2,0	10,8	2.500
3412EA01	14,0	2,0	12,3	2.500
3413EA01	15,0	3,0	12,8	2.500
3414EA01	16,0	3,0	12,5	2.000
3415EA01	18,0	3,0	13,0	2.000
3416EA01	20,0	4,0	13,9	2.000
3417EA01	22,0	4,0	13,9	2.500
3418EA01	25,0	4,0	17,8	2.000
3419EA01	28,0	5,0	15,0	1.500
3420EA01	30,0	5,0	16,0	1.000

Codice	A	B	C	Conf./pezzi
3421EA01	32,0	5,0	16,0	1.000
3422EA01	35,0	5,0	17,0	1.000
3423EA01	40,0	5,0	17,0	1.000
3424EA01	45,0	5,0	17,0	1.000
3425EA01	50,0	5,0	17,0	1.000
3426EA01	60,0	5,0	17,0	750
3427EA01	80,0	6,0	17,0	400