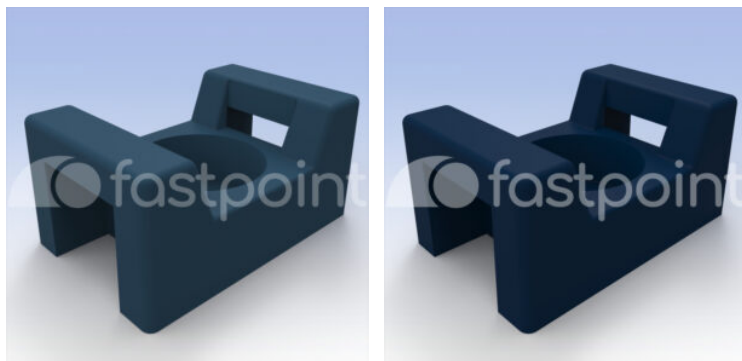


## SUPPORTI PER FASCETTE A SELLA RILEVABILI



### Descrizione tecnica

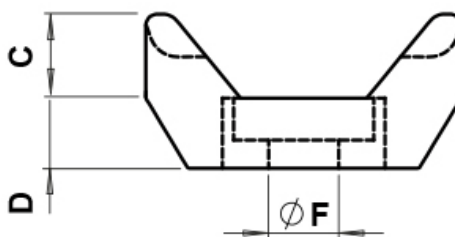
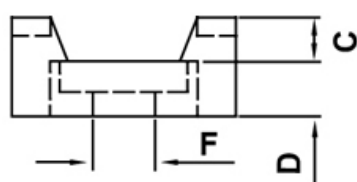
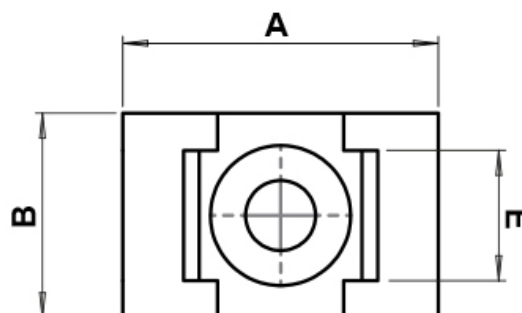
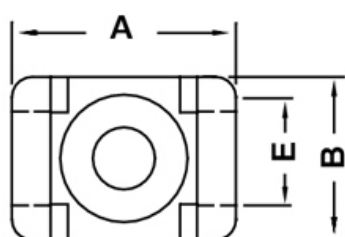
**Materiale:** PA 6.6 con pigmenti metallici

**Colore:** blu

**Autoestinguenza:** HB (UL 94)

**Temperatura d'esercizio:** -40°C ~ +85°C

Tutte le quote sono in mm.



TYPE 1

TYPE 2

Codice	A	B	C	D	E	F	Type	Conf./pezzi
2513AD08	22,0	16,0	5,2	4,8	9,0	5,0	2	1.000
3978AD08	15,0	9,5	3,7	3,5	5,0	3,7	1	1.000