

## RONDELLE PER BOCCOLE



### Descrizione tecnica

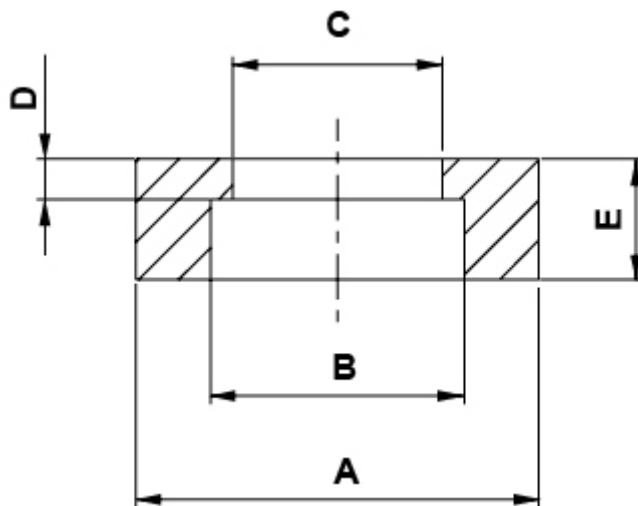
**Materiale:** PA 6.6 , 25%GV

**Colore:** naturale

**Autoestinguenza:** HB (UL 94)

**Temperatura esercizio:** -30°C ~ +110°C

Tutte le quote sono in mm



| Codice   | A    | B   | C   | D   | E   | Conf./pezzi |
|----------|------|-----|-----|-----|-----|-------------|
| 2830BB00 | 10,0 | 6,2 | 5,3 | 1,0 | 2,0 | 1.000       |
| 2831BB00 | 10,0 | 6,2 | 5,3 | 1,0 | 3,0 | 1.000       |
| 2832BB00 | 10,0 | 6,2 | 5,3 | 1,0 | 4,0 | 1.000       |
| 2833BB00 | 10,0 | 6,2 | 5,3 | 1,0 | 5,0 | 1.000       |
| 2834BB00 | 10,0 | 6,2 | 5,3 | 2,0 | 3,0 | 1.000       |
| 2835BB00 | 10,0 | 6,2 | 5,3 | 2,0 | 4,0 | 1.000       |

| Codice   | A    | B   | C   | D   | E   | Conf./pezzi |
|----------|------|-----|-----|-----|-----|-------------|
| 2836BB00 | 10,0 | 6,2 | 5,3 | 2,0 | 5,0 | 1.000       |