

PIEDINI E PARACOLPI IN PVC



Descrizione tecnica

Materiale: PVC

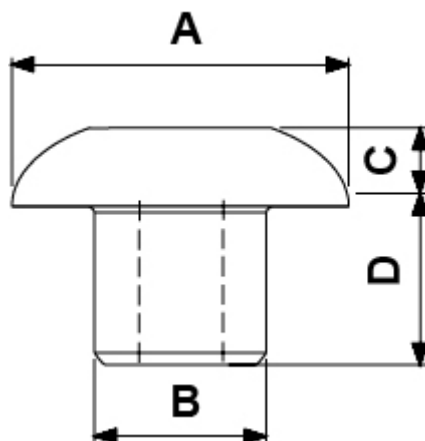
Temperatura esercizio: -25°C ~ +60°C

Materiale: LD - PE

Temperatura esercizio: -30°C ~ +60°C

Colore: nero

Tutte le quote sono in mm



Codice	A	B	C	D	Materiale	Type	Conf./pezzi
0426CA01	9,5	5,0	3,0	6,0	PVC morbido	1	2.500
0426EA01	9,5	5,0	3,0	6,0	PE-LD	1	2.500
0427CA01	12,0	6,0	3,0	7,5	PVC morbido	1	2.500
0427EA01	12,0	6,0	3,0	7,5	PE-LD	1	2.500
0428CA01	14,0	6,0	4,0	15,0	PVC morbido	1	2.500

Codice	A	B	C	D	Materiale	Type	Conf./pezzi
0428EA01	14,0	6,0	4,0	15,0	PE-LD	1	2.500
0429CA01	18,0	8,0	5,0	15,0	PVC morbido	1	2.500
0429EA01	18,0	8,0	5,0	15,0	PE-LD	1	2.500
0430CA01	20,0	8,0	5,0	15,0	PVC morbido	1	2.500
0430EA01	20,0	8,0	5,0	15,0	PE-LD	1	2.500
0431CA01	24,0	11,0	5,0	13,0	PVC morbido	1	2.500
0431EA01	24,0	11,0	5,0	13,0	PE-LD	1	2.500
0966CA01	10,0	8,0	3,0	9,0	PVC morbido	1	2.500