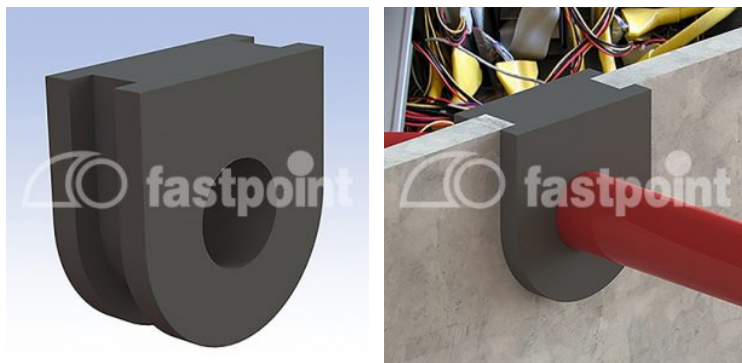


PASSACAVI SPECIALI BORDO LAMIERA



Descrizione tecnica

Materiale: Vedi tabella

Autoestinguenza:

- PVC: HB (UL94)

- TPE: HB (UL94)

Temperatura d'esercizio:

- PVC: -25°C ~ +60°C

- TPE: -28°C ~ +90°C

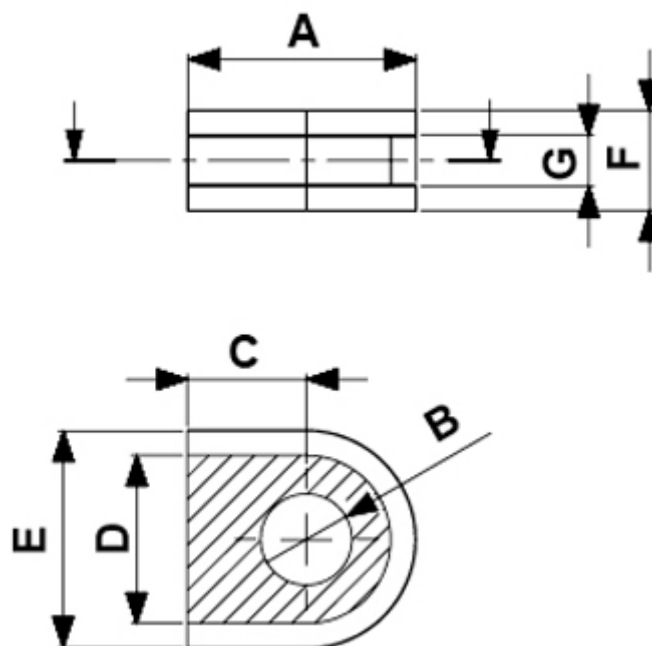
Colore: nero

Temperatura esercizio:

PVC: -25°C ~ +60°C

TPE: -28°C ~ +90°C solo su richiesta

Tutte le quote sono in mm.



Codice	A	B	C	D	E	F	G	Materiale	Note	Conf./pezzi
13081CA01M	24,0	13,5	-	20,0	24,0	9,0	2,0	PVC	Con membrana / With membrane	1.000
15902PS01	24,0	13,5	12,0	20,0	24,0	9,0	4,0	TPE	500	
4281CA01	23,0	10,0	12,5	17,0	22,0	10,0	5,0	PVC	1.000	
4282CA01	10,0	3,0	4,0	8,0	12,0	7,0	3,0	PVC Shore 50	1.000	
4688CA01	23,0	8,5	12,5	17,0	22,0	10,0	5,0	PVC	1.000	