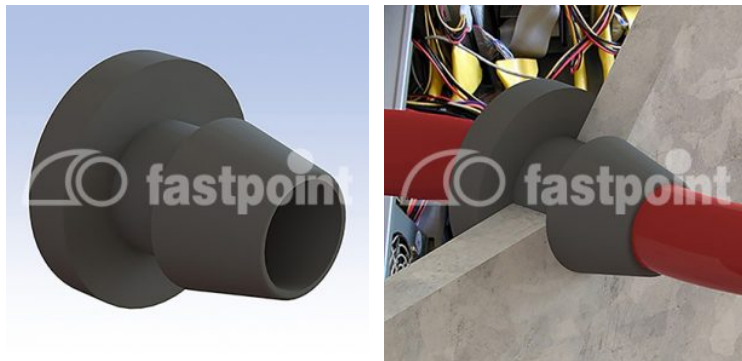


PASSACAVI IN PVC



Descrizione tecnica

Materiale: PVC

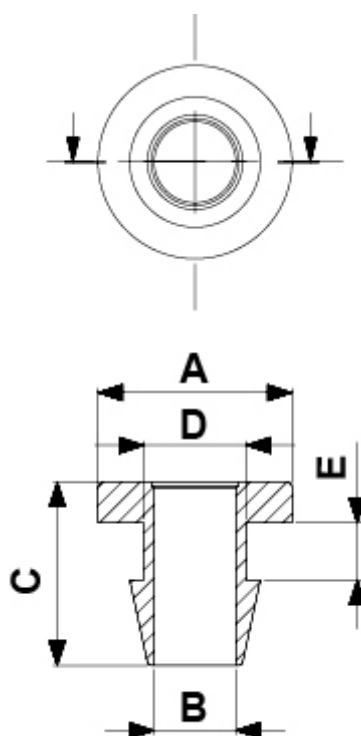
Colore: nero

Temperatura esercizio:

-PVC: -25°C ~ +60°C

-TPE: -28°C ~ +90°C solo su richiesta

Tutte le quote sono in mm.



Codice	A	B	C	D	E	Conf./pezzi
0819CA01	9,5	2,5	7,0	6,0	1,0	1.000
4507CA01	9,5	2,0	9,0	6,0	3,0	1.000

Codice	A	B	C	D	E	Conf./pezzi
4518CA01	9,5	4,5	8,0	6,0	2,0	1.000
4517CA01	9,5	4,5	7,0	6,0	1,0	1.000
4516CA01	9,5	4,0	9,0	6,0	3,0	1.000
4515CA01	9,5	4,0	8,0	6,0	2,0	1.000
4514CA01	9,5	4,0	7,0	6,0	1,0	1.000
4513CA01	9,5	3,5	9,0	6,0	3,0	1.000
4512CA01	9,5	3,5	8,0	6,0	2,0	1.000
4511CA01	9,5	3,0	9,0	6,0	3,0	1.000
4509CA01	9,5	2,5	9,0	6,0	3,0	1.000
4508CA01	9,5	2,5	8,0	6,0	2,0	1.000
4506CA01	9,5	2,0	8,0	6,0	2,0	1.000
0820CA01	9,5	3,0	7,0	6,0	1,0	1.000
4505CA01	9,5	2,0	7,0	6,0	1,0	1.000
0821CA01	9,5	3,5	7,0	6,0	1,0	1.000
4519CA01	9,5	4,5	9,0	6,0	3,0	1.000
1234CA01	11,0	5,0	9,0	7,0	1,5	1.000
0866CA01	11,0	5,0	9,0	7,0	2,0	1.000
0848CA01	13,5	7,0	9,0	11,0	2,0	1.000
1034CA01	20,0	8,0	13,0	12,0	1,0	1.000
1033CA01	20,0	6,0	13,0	12,0	1,0	1.000
1036CA01	28,0	12,0	15,0	16,0	1,0	1.000
1035CA01	28,0	10,0	15,0	16,0	1,0	1.000
1032CA01	39,0	20,0	17,0	25,0	1,0	1.000
1031CA01	39,0	18,0	17,0	25,0	1,0	1.000