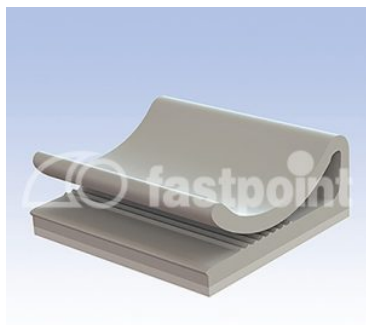


FERMACAVI AUTOADESIVI PER CAVI PIATTI

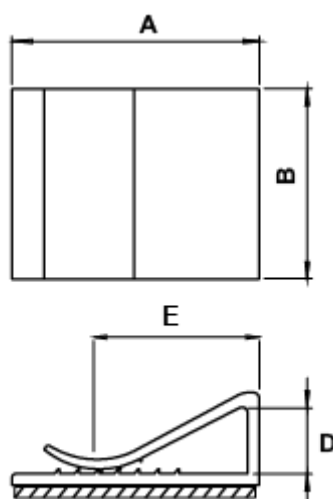


Descrizione tecnica

Materiale: vedi tabella

Temperatura esercizio adesivo standard: -25°C ~ +70°C

Tutte le quote sono in mm.



Codice	A	B	D	E	Colore	Materiale	Conf./pezzi
2514CC11AS	26,0	20,0	7,0	12,0	Grigio	PVC	1.000
2515CC11AS	26,0	25,0	7,0	12,0	Grigio	PVC	1.000
2516CC11AS	26,0	30,0	7,0	12,0	Grigio	PVC	1.000
6394AA00AS	27,0	15,0	8,8	15,0	Naturale	PA 6.6	1.000
6395AA00AS	27,0	20,0	8,8	15,0	Naturale	PA 6.6	1.000
6396AA00AS	27,0	25,4	8,8	15,0	Naturale	PA 6.6	1.000