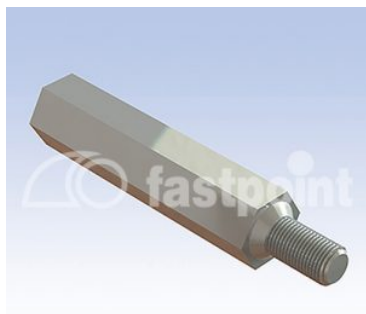


DISTANZIATORI OTTONE & ACCIAIO M5

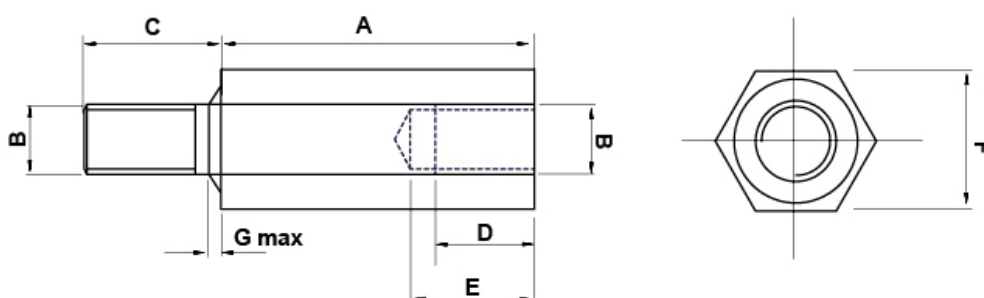


Descrizione tecnica

Materiale: Ottone nichelato

Disponibili anche in **acciaio zincato**.

Tutte le quote sono in mm



| Codice | A | B | C | D | E | F | G | Conf./pezzi |
|----------|-------|----|------|------|------|-----|-----|-------------|
| 4694MA92 | 10,0 | M5 | 8,0 | 6,0 | 8,5 | 8,0 | 1,6 | 500 |
| 4695MA92 | 15,0 | M5 | 8,0 | 8,0 | 13,0 | 8,0 | 1,6 | 500 |
| 4696MA92 | 20,0 | M5 | 8,0 | 8,0 | 13,0 | 8,0 | 1,6 | 500 |
| 4756MA92 | 25,0 | M5 | 10,0 | 10,0 | 15,0 | 8,0 | 1,6 | 500 |
| 4757MA92 | 30,0 | M5 | 10,0 | 10,0 | 15,0 | 8,0 | 1,6 | 500 |
| 4758MA92 | 40,0 | M5 | 10,0 | 10,0 | 15,0 | 8,0 | 1,6 | 500 |
| 4759MA92 | 50,0 | M5 | 10,0 | 10,0 | 15,0 | 8,0 | 1,6 | 500 |
| 4760MA92 | 60,0 | M5 | 10,0 | 10,0 | 15,0 | 8,0 | 1,6 | 500 |
| 4800MA92 | 70,0 | M5 | 10,0 | 10,0 | 15,0 | 8,0 | 1,6 | 500 |
| 4801MA92 | 80,0 | M5 | 10,0 | 10,0 | 15,0 | 8,0 | 1,6 | 500 |
| 4802MA92 | 100,0 | M5 | 10,0 | 10,0 | 15,0 | 8,0 | 1,6 | 500 |
| 7137MA92 | 12,0 | M5 | 8,0 | 8,0 | 10,0 | 8,0 | 1,6 | 500 |

| Codice | A | B | C | D | E | F | G | Conf./pezzi |
|----------|------|----|------|------|------|-----|-----|-------------|
| 7138MA92 | 18,0 | M5 | 8,0 | 8,0 | 13,0 | 8,0 | 1,6 | 500 |
| 7139MA92 | 35,0 | M5 | 10,0 | 10,0 | 15,0 | 8,0 | 1,6 | 500 |