

## DISTANZIATORI OTTONE & ACCIAIO M2,5



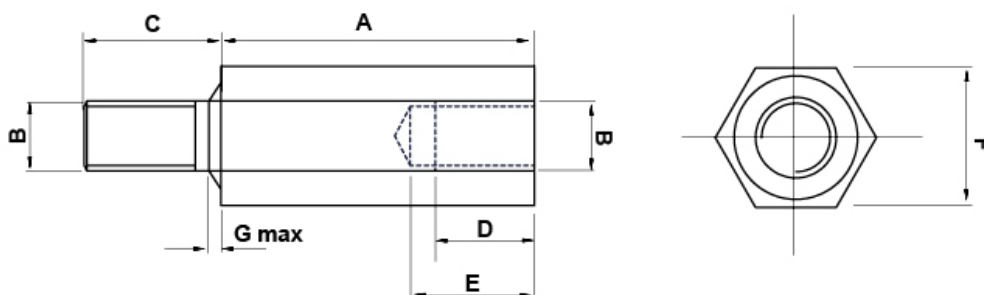
### Descrizione tecnica

**Materiale:** Ottone nichelato

Tutte le quote sono in mm

Disponibili anche in **acciaio zincato**.

Tutte le quote sono in mm



Codice	A	B	C	D	E	F	G	Conf./pezzi
7105MA92	5,0	M2,5	6,0	3,0	4,3	5,0	0,9	500
7106MA92	8,0	M2,5	6,0	4,0	6,5	5,0	0,9	500
7107MA92	10,0	M2,5	6,0	6,0	8,5	5,0	0,9	500
7108MA92	12,0	M2,5	6,0	8,0	10,0	5,0	0,9	500
7109MA92	15,0	M2,5	6,0	8,0	13,0	5,0	0,9	500
7110MA92	18,0	M2,5	6,0	8,0	13,0	5,0	0,9	500
7111MA92	20,0	M2,5	6,0	8,0	13,0	5,0	0,9	500
7112MA92	25,0	M2,5	6,0	8,0	13,0	5,0	0,9	500
7113MA92	30,0	M2,5	6,0	8,0	13,0	5,0	0,9	500
7114MA92	35,0	M2,5	6,0	8,0	13,0	5,0	0,9	500
7115MA92	40,0	M2,5	6,0	8,0	13,0	5,0	0,9	500