

DISTANZIATORI METRICI FILETTATI ESAGONALI M2



Descrizione tecnica

Materiale: PA 6.6

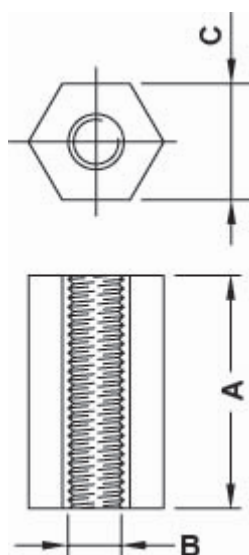
Colore: Naturale

- Da A 4,0 ad A 12,7 foro passante
- Da A 13,0 in poi la lunghezza minima della filettatura è 4,0

Autoestinguenza: V2 (UL94)

Temperatura d'esercizio: -35°C ~ +85°C

Tutte le quote sono in mm



Codice	A	B	C	Conf./pezzi
11456AA0004.0	4,0	M2	4,0	1.000
11456AA0004.5	4,5	M2	4,0	1.000

Codice	A	B	C	Conf./pezzi
11456AA0005.0	5,0	M2	4,0	1.000
11456AA0006.0	6,0	M2	4,0	1.000
11456AA0007.0	7,0	M2	4,0	1.000
11456AA0008.0	8,0	M2	4,0	1.000
11456AA0009.0	9,0	M2	4,0	1.000
11456AA0010.0	10,0	M2	4,0	1.000
11456AA0011.0	11,0	M2	4,0	1.000
11456AA0012.0	12,0	M2	4,0	1.000
11456AA0012.7	12,7	M2	4,0	1.000
11456AA0013.0	13,0	M2	4,0	1.000
11456AA0014.0	14,0	M2	4,0	1.000
11456AA0015.0	15,0	M2	4,0	1.000
11456AA0016.0	16,0	M2	4,0	1.000
11456AA0017.0	17,0	M2	4,0	1.000
11456AA0018.0	18,0	M2	4,0	1.000
11456AA0019.0	19,0	M2	4,0	1.000
11456AA0020.0	20,0	M2	4,0	1.000
11456AA0021.0	21,0	M2	4,0	1.000
11456AA0022.0	22,0	M2	4,0	1.000
11456AA0023.0	23,0	M2	4,0	1.000
11456AA0024.0	24,0	M2	4,0	1.000
11456AA0025.0	25,0	M2	4,0	1.000