

## DISTANZIATORI M/F M5 ESAGONO 10,0



### Descrizione tecnica

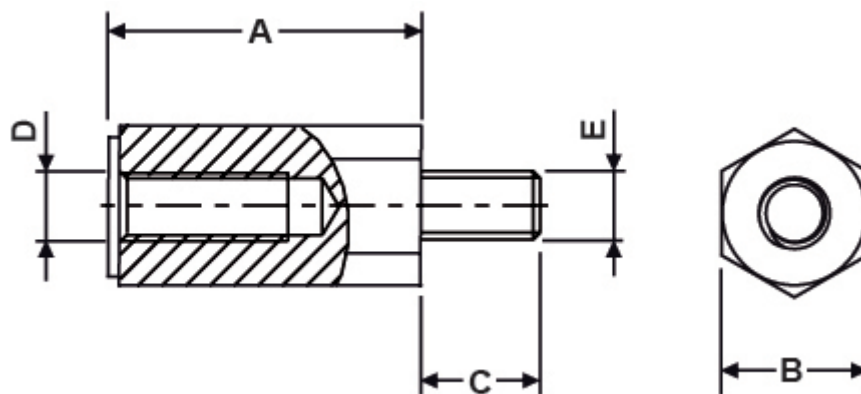
**Materiale:** PA 6.6

**Colore:** nero

**Autoestinguenza:** HB (UL 94)

**Temperatura esercizio:** -30°C ~ +130°C

Tutte le quote sono in mm



Codice	A	B	C	D	E	Conf./pezzi
10021AA0108.0	8,0	10,0	10,0	M5	M5	500
10021AA0109.0	9,0	10,0	10,0	M5	M5	500
10021AA0110.0	10,0	10,0	10,0	M5	M5	500
10021AA0111.0	11,0	10,0	10,0	M5	M5	500
10021AA0112.0	12,0	10,0	10,0	M5	M5	500
10021AA0113.0	13,0	10,0	10,0	M5	M5	500
10021AA0114.0	14,0	10,0	10,0	M5	M5	500

Codice	A	B	C	D	E	Conf./pezzi
10021AA0115.0	15,0	10,0	10,0	M5	M5	500
10021AA0116.0	16,0	10,0	10,0	M5	M5	500
10021AA0117.0	17,0	10,0	10,0	M5	M5	500
10021AA0118.0	18,0	10,0	10,0	M5	M5	500
10021AA0119.0	19,0	10,0	10,0	M5	M5	500
10021AA0120.0	20,0	10,0	10,0	M5	M5	500
10021AA0121.0	21,0	10,0	10,0	M5	M5	500
10021AA0122.0	22,0	10,0	10,0	M5	M5	500
10021AA0123.0	23,0	10,0	10,0	M5	M5	500
10021AA0124.0	24,0	10,0	10,0	M5	M5	500
10021AA0125.0	25,0	10,0	10,0	M5	M5	500
10021AA0126.0	26,0	10,0	10,0	M5	M5	500
10021AA0127.0	27,0	10,0	10,0	M5	M5	500
10021AA0128.0	28,0	10,0	10,0	M5	M5	500
10021AA0129.0	29,0	10,0	10,0	M5	M5	500
10021AA0130.0	30,0	10,0	10,0	M5	M5	500
10021AA0131.0	31,0	10,0	10,0	M5	M5	500
10021AA0132.0	32,0	10,0	10,0	M5	M5	500
10021AA0133.0	33,0	10,0	10,0	M5	M5	500
10021AA0134.0	34,0	10,0	10,0	M5	M5	500
10021AA0135.0	35,0	10,0	10,0	M5	M5	500
10021AA0136.0	36,0	10,0	10,0	M5	M5	500
10021AA0137.0	37,0	10,0	10,0	M5	M5	500
10021AA0138.0	38,0	10,0	10,0	M5	M5	500
10021AA0139.0	39,0	10,0	10,0	M5	M5	500
10021AA0140.0	40,0	10,0	10,0	M5	M5	500
10021AA0141.0	41,0	10,0	10,0	M5	M5	500
10021AA0142.0	42,0	10,0	10,0	M5	M5	500
10021AA0143.0	43,0	10,0	10,0	M5	M5	500
10021AA0144.0	44,0	10,0	10,0	M5	M5	500
10021AA0145.0	45,0	10,0	10,0	M5	M5	500

Codice	A	B	C	D	E	Conf./pezzi
10021AA0146.0	46,0	10,0	10,0	M5	M5	500
10021AA0147.0	47,0	10,0	10,0	M5	M5	500
10021AA0148.0	48,0	10,0	10,0	M5	M5	500
10021AA0149.0	49,0	10,0	10,0	M5	M5	500
10021AA0150.0	50,0	10,0	10,0	M5	M5	500
10021AA0151.0	51,0	10,0	10,0	M5	M5	500
10021AA0152.0	52,0	10,0	10,0	M5	M5	500
10021AA0153.0	53,0	10,0	10,0	M5	M5	500
10021AA0154.0	54,0	10,0	10,0	M5	M5	500
10021AA0155.0	55,0	10,0	10,0	M5	M5	500
10021AA0156.0	56,0	10,0	10,0	M5	M5	500
10021AA0157.0	57,0	10,0	10,0	M5	M5	500
10021AA0158.0	58,0	10,0	10,0	M5	M5	500
10021AA0159.0	59,0	10,0	10,0	M5	M5	500
10021AA0160.0	60,0	10,0	10,0	M5	M5	500
10021AA0161.0	61,0	10,0	10,0	M5	M5	500
10021AA0162.0	62,0	10,0	10,0	M5	M5	500
10021AA0163.0	63,0	10,0	10,0	M5	M5	500
10021AA0164.0	64,0	10,0	10,0	M5	M5	500
10021AA0165.0	65,0	10,0	10,0	M5	M5	500