

# DISTANZIATORI CILINDRICI DIAMETRO INTERNO 9,6; Ø EST. 12,0



## Descrizione tecnica

**Materiale:** PA 6 , 25%GV

**Autoestinguenza:** HB (UL 94)

**Colore:** nero

**Temperatura esercizio:** -35°C ~ +100°C

Su richiesta speciale:

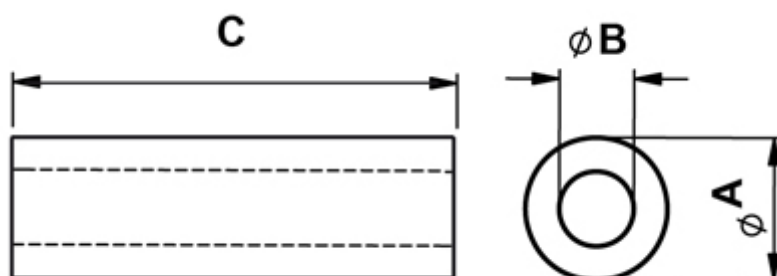
**Materiale:** polistirene

**Autoestinguenza:** HB (UL 94)

**Colore:** Bianco

**Temperatura esercizio:** -40°C ~ +70°C

**Tutte le quote sono in mm**



Codice	A	B	C	Conf./pezzi
10127BB0102.0	12,0	9,6	2,0	500

Codice	A	B	C	Conf./pezzi
10127BB0103.0	12,0	9,6	3,0	500
10127BB0104.0	12,0	9,6	4,0	500
10127BB0105.0	12,0	9,6	5,0	500
10127BB0106.0	12,0	9,6	6,0	500
10127BB0107.0	12,0	9,6	7,0	500
10127BB0108.0	12,0	9,6	8,0	500
10127BB0109.0	12,0	9,6	9,0	500
10127BB0110.0	12,0	9,6	10,0	500
10127BB0111.0	12,0	9,6	11,0	500
10127BB0112.0	12,0	9,6	12,0	500
10127BB0113.0	12,0	9,6	13,0	500
10127BB0114.0	12,0	9,6	14,0	500
10127BB0115.0	12,0	9,6	15,0	500
10127BB0116.0	12,0	9,6	16,0	500
10127BB0117.0	12,0	9,6	17,0	500
10127BB0118.0	12,0	9,6	18,0	500
10127BB0119.0	12,0	9,6	19,0	500
10127BB0120.0	12,0	9,6	20,0	500
10127BB0121.0	12,0	9,6	21,0	500
10127BB0122.0	12,0	9,6	22,0	500
10127BB0123.0	12,0	9,6	23,0	500
10127BB0124.0	12,0	9,6	24,0	500
10127BB0125.0	12,0	9,6	25,0	500
10127BB0126.0	12,0	9,6	26,0	500
10127BB0127.0	12,0	9,6	27,0	500
10127BB0128.0	12,0	9,6	28,0	500
10127BB0129.0	12,0	9,6	29,0	500
10127BB0130.0	12,0	9,6	30,0	500
10127BB0131.0	12,0	9,6	31,0	500
10127BB0132.0	12,0	9,6	32,0	500
10127BB0133.0	12,0	9,6	33,0	500

Codice	A	B	C	Conf./pezzi
10127BB0134.0	12,0	9,6	34,0	500
10127BB0135.0	12,0	9,6	35,0	500
10127BB0136.0	12,0	9,6	36,0	500
10127BB0137.0	12,0	9,6	37,0	500
10127BB0138.0	12,0	9,6	38,0	500
10127BB0139.0	12,0	9,6	39,0	500
10127BB0140.0	12,0	9,6	40,0	500
10127BB0141.0	12,0	9,6	41,0	500
10127BB0142.0	12,0	9,6	42,0	500
10127BB0143.0	12,0	9,6	43,0	500
10127BB0144.0	12,0	9,6	44,0	500
10127BB0145.0	12,0	9,6	45,0	500
10127BB0146.0	12,0	9,6	46,0	500
10127BB0147.0	12,0	9,6	47,0	500
10127BB0148.0	12,0	9,6	48,0	500
10127BB0149.0	12,0	9,6	49,0	500
10127BB0150.0	12,0	9,6	50,0	500