

# DISTANZIATORI CILINDRICI DIAM. INT. 2,2 / DIAM. EST. 4,0



## Descrizione tecnica

**Materiale:** PA 6 , 25%GV

**Autoestinguenza:** HB (UL 94)

**Colore:** nero

**Temperatura esercizio:** -35°C ~ +100°C

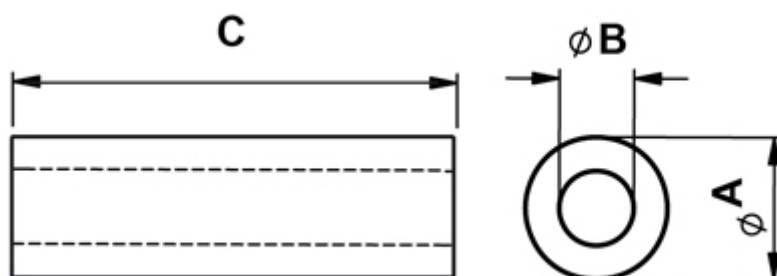
Alternativa:

**Materiale:** polistirene

**Autoestinguenza:** HB (UL 94)

**Colore:** Bianco

**Temperatura esercizio:** -40°C ~ +70°C



Codice	A	B	C	Conf./pezzi
10085BB0101.0	4,0	2,2	1,0	500
10085BB0102.0	4,0	2,2	2,0	500

Codice	A	B	C	Conf./pezzi
10085BB0103.0	4,0	2,2	3,0	500
10085BB0104.0	4,0	2,2	4,0	500
10085BB0105.0	4,0	2,2	5,0	500
10085BB0106.0	4,0	2,2	6,0	500
10085BB0107.0	4,0	2,2	7,0	500
10085BB0108.0	4,0	2,2	8,0	500
10085BB0109.0	4,0	2,2	9,0	500
10085BB0110.0	4,0	2,2	10,0	500
10085BB0111.0	4,0	2,2	11,0	500
10085BB0112.0	4,0	2,2	12,0	500
10085BB0113.0	4,0	2,2	13,0	500
10085BB0114.0	4,0	2,2	14,0	500
10085BB0115.0	4,0	2,2	15,0	500
10085BB0116.0	4,0	2,2	16,0	500
10085BB0117.0	4,0	2,2	17,0	500
10085BB0118.0	4,0	2,2	18,0	500
10085BB0119.0	4,0	2,2	19,0	500
10085BB0120.0	4,0	2,2	20,0	500
10085BB0121.0	4,0	2,2	21,0	500
10085BB0122.0	4,0	2,2	22,0	500
10085BB0123.0	4,0	2,2	23,0	500
10085BB0124.0	4,0	2,2	24,0	500
10085BB0125.0	4,0	2,2	25,0	500
10085BB0126.0	4,0	2,2	26,0	500
10085BB0127.0	4,0	2,2	27,0	500
10085BB0128.0	4,0	2,2	28,0	500
10085BB0129.0	4,0	2,2	29,0	500
10085BB0130.0	4,0	2,2	30,0	500
10085BB0131.0	4,0	2,2	31,0	500
10085BB0132.0	4,0	2,2	32,0	500
10085BB0133.0	4,0	2,2	33,0	500

Codice	A	B	C	Conf./pezzi
10085BB0134.0	4,0	2,2	34,0	500
10085BB0135.0	4,0	2,2	35,0	500
10085BB0136.0	4,0	2,2	36,0	500
10085BB0137.0	4,0	2,2	37,0	500
10085BB0138.0	4,0	2,2	38,0	500
10085BB0139.0	4,0	2,2	39,0	500
10085BB0140.0	4,0	2,2	40,0	500
10085BB0141.0	4,0	2,2	41,0	500
10085BB0142.0	4,0	2,2	42,0	500
10085BB0143.0	4,0	2,2	43,0	500
10085BB0144.0	4,0	2,2	44,0	500
10085BB0145.0	4,0	2,2	45,0	500
10085BB0146.0	4,0	2,2	46,0	500
10085BB0147.0	4,0	2,2	47,0	500
10085BB0148.0	4,0	2,2	48,0	500
10085BB0149.0	4,0	2,2	49,0	500
10085BB0150.0	4,0	2,2	50,0	500