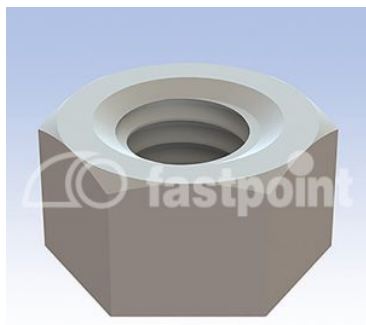


# TUERCA HEXAGONAL



## Descripción Técnica

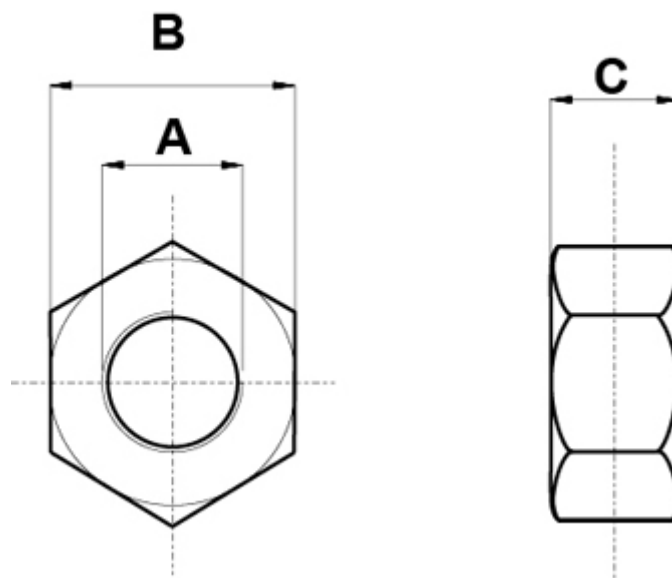
**Material:** PA6

**Color:** Natural

**Norma de referencia:** DIN EN ISO 34814 / 934

**Temperatura de trabajo:** -30° C ~ + 100°C

Todas las medidas están indicadas en mm



Codigo	A	B	C	DIN	Conf./piezas
15577AA00	M 2	4,0	1,2	34814	1.000
15903AA00	M 2,5	5,0	2,0	34814	1.000
10413AA00	M 3	6,0	2,15-2,4	34814	1.000
10414AA00	M 4	7,0	3,2	34814	1.000

Codigo	A	B	C	DIN	Conf./piezas
10415AA00	M 5	8,0	4,0	34814	1.000
10416AA00	M 6	10,0	5,0	34814	1.000
10417AA00	M 8	13,0	6,4	34814	1.000
10418AA00	M 10	17,0*	8,0	555/934	1.000
10419AA00	M 12	19,0*	10,1	555/934	1.000
10420AA00	M 14	21,0	12,8	34814	1.000
10421AA00	M 16	24,0	14,8	34814	1.000
10422AA00	M 20	30,0	18,0	34814	1.000
10423AA00	M 24	36,0	21,5	34814	1.000