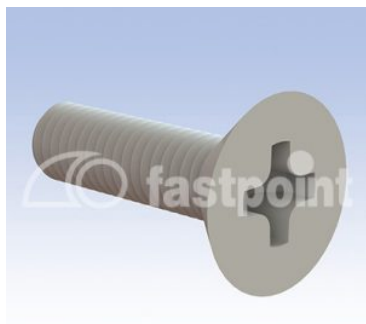


TORNILLO CABEZA AVELLANADA Y CORTE EN CRUZ – DIN 34811



Descripción Técnica

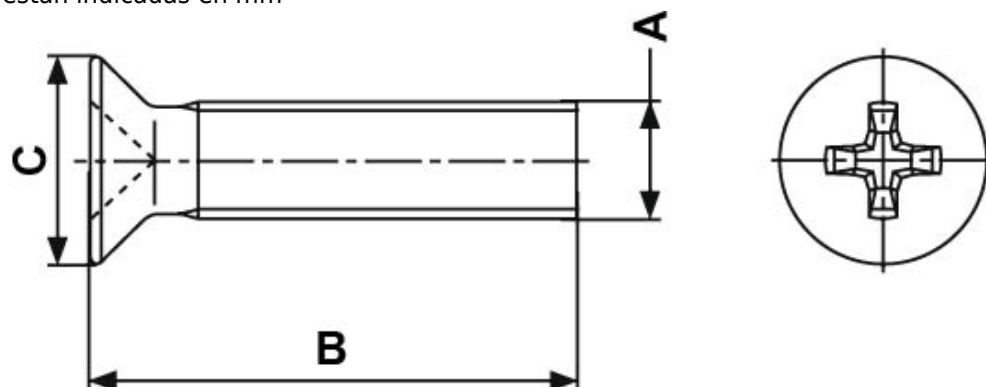
Material: PA6

Color: Natural

Norma de referencia: DIN 34811 (antes DIN 965)

Temperatura de trabajo: -30°C ~ +100°C

Todas las medidas están indicadas en mm



Codigo	A	B	C	Conf./piezas
10372AA0004.0	M2.5	4,0	4,7	1.000
10372AA0005.0	M2.5	5,0	4,7	1.000
10372AA0006.0	M2.5	6,0	4,7	1.000
10372AA0008.0	M2.5	8,0	4,7	1.000
10372AA0010.0	M2.5	10,0	4,7	1.000
10372AA0012.0	M2.5	12,0	4,7	1.000
10372AA0016.0	M2.5	16,0	4,7	1.000
10372AA0020.0	M2.5	20,0	4,7	1.000
10372AA0025.0	M2.5	25,0	4,7	1.000
10373AA0005.0	M 3	5,0	5,6	1.000

Codigo	A	B	C	Conf./piezas
10373AA0006.0	M 3	6,0	5,6	1.000
10373AA0008.0	M 3	8,0	5,6	1.000
10373AA0010.0	M 3	10,0	5,6	1.000
10373AA0012.0	M 3	12,0	5,6	1.000
10373AA0014.0	M 3	14,0	5,6	1.000
10373AA0016.0	M 3	16,0	5,6	1.000
10373AA0018.0	M 3	18,0	5,6	1.000
10373AA0020.0	M 3	20,0	5,6	1.000
10373AA0022.0	M 3	22,0	5,6	1.000
10373AA0025.0	M 3	25,0	5,5	1.000
10373AA0027.0	M 3	27,0	5,6	1.000
10373AA0030.0	M 3	30,0	5,6	1.000
10374AA0004.0	M 4	4,0	7,5	1.000
10374AA0006.0	M 4	6,0	7,5	1.000
10374AA0008.0	M 4	8,0	7,5	1.000
10374AA0010.0	M 4	10,0	7,5	1.000
10374AA0012.0	M 4	12,0	7,5	1.000
10374AA0014.0	M 4	14,0	7,5	1.000
10374AA0016.0	M 4	16,0	7,5	1.000
10374AA0018.0	M 4	18,0	7,5	1.000
10374AA0020.0	M 4	20,0	7,5	1.000
10374AA0022.0	M 4	22,0	7,5	1.000
10374AA0025.0	M 4	25,0	7,5	1.000
10374AA0027.0	M 4	27,0	7,5	1.000
10374AA0030.0	M 4	30,0	7,5	1.000
10375AA0007.0	M 5	7,0	10,0	1.000
10375AA0008.0	M 5	8,0	10,0	1.000
10375AA0010.0	M 5	10,0	10,0	1.000
10375AA0012.0	M 5	12,0	10,0	1.000
10375AA0014.0	M 5	14,0	10,0	1.000
10375AA0016.0	M 5	16,0	10,0	1.000

Codigo	A	B	C	Conf./piezas
10375AA0018.0	M 5	18,0	10,0	1.000
10375AA0020.0	M 5	20,0	10,0	1.000
10375AA0022.0	M 5	22,0	10,0	1.000
10375AA0025.0	M 5	25,0	10,0	1.000
10375AA0030.0	M 5	30,0	10,0	1.000
10375AA0035.0	M 5	35,0	10,0	1.000
10375AA0040.0	M 5	40,0	10,0	1.000
10376AA0008.0	M 6	8,0	11,0	1.000
10376AA0010.0	M 6	10,0	11,0	1.000
10376AA0012.0	M 6	12,0	11,0	1.000
10376AA0015.0	M 6	15,0	11,0	1.000
10376AA0020.0	M 6	20,0	11,0	1.000
10376AA0022.0	M 6	22,0	11,0	1.000
10376AA0025.0	M 6	25,0	11,0	1.000
10376AA0030.0	M 6	30,0	11,0	1.000
10376AA0035.0	M 6	35,0	11,0	1.000
10376AA0040.0	M 6	40,0	11,0	1.000
10376AA0045.0	M 6	45,0	11,0	1.000
10377AA0010.0	M 8	10,0	14,5	1.000
10377AA0012.0	M 8	12,0	14,5	1.000
10377AA0014.0	M 8	14,0	14,5	1.000
10377AA0016.0	M 8	16,0	14,5	1.000
10377AA0018.0	M 8	18,0	14,5	1.000
10377AA0020.0	M 8	20,0	14,5	1.000
10377AA0022.0	M 8	22,0	14,5	1.000
10377AA0025.0	M 8	25,0	14,5	1.000
10377AA0028.0	M 8	28,0	14,5	1.000
10377AA0030.0	M 8	30,0	14,5	1.000
10377AA0035.0	M 8	35,0	14,5	1.000