

# SEPARADORES M3 DE LATÓN Y ACERO



## Descripción Técnica

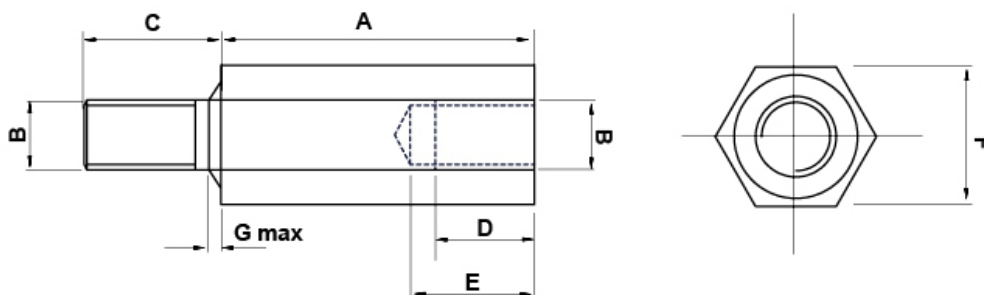
**Material:** Latón

**Acabado:** Niquelado

Disponibilidad también en acero cincado

Para solicitar en acero sustituir en el código -MA92 por -MC94

Todas las medidas están indicadas en mm



Código	A	B	C	D	E	F	G	Conf./piezas
4527MA92	5,0	M3	8,0	3,0	4,3	5,0	1,0	500
4528MA92	10,0	M3	8,0	6,0	8,5	5,0	1,0	500
4529MA92	15,0	M3	8,0	8,0	13,0	5,0	1,0	500
4530MA92	20,0	M3	8,0	8,0	13,0	5,0	1,0	500
4531MA92	25,0	M3	10,0	10,0	15,0	5,0	1,0	500
4532MA92	30,0	M3	10,0	10,0	15,0	5,0	1,0	500
4533MA92	35,0	M3	10,0	10,0	15,0	5,0	1,0	500
4534MA92	40,0	M3	10,0	10,0	15,0	5,0	1,0	500
4535MA92	45,0	M3	10,0	10,0	15,0	5,0	1,0	500

Codigo	A	B	C	D	E	F	G	Conf./piezas
4536MA92	50,0	M3	10,0	10,0	15,0	5,0	1,0	500
4537MA92	55,0	M3	10,0	10,0	15,0	5,0	1,0	500
4538MA92	60,0	M3	10,0	10,0	15,0	5,0	1,0	500
4690MA92	8,0	M3	8,0	4,0	6,5	5,0	1,0	500
4691MA92	12,0	M3	8,0	8,0	13,0	5,0	1,0	500
7116MA92	18,0	M3	8,0	8,0	13,0	5,0	1,0	500
7117MA92	70,0	M3	10,0	10,0	15,0	5,0	1,0	500
7118MA92	80,0	M3	10,0	10,0	150,0	5,0	1,0	500
7119MA92	5,0	M3	8,0	3,0	4,3	5,5	1,0	500
7120MA92	8,0	M3	8,0	4,0	6,5	5,5	1,0	500
7121MA92	10,0	M3	8,0	6,0	8,5	5,5	1,0	500
7122MA92	12,0	M3	8,0	8,0	13,0	5,5	1,0	500
7123MA92	15,0	M3	8,0	8,0	13,0	5,5	1,0	500
7124MA92	18,0	M3	8,0	8,0	13,0	5,5	1,0	500
7125MA92	20,0	M3	8,0	8,0	13,0	5,5	1,0	500
7126MA92	25,0	M3	10,0	10,0	15,0	5,5	1,0	500
7127MA92	30,0	M3	10,0	10,0	15,0	5,5	1,0	500
7128MA92	35,0	M3	10,0	10,0	15,0	5,5	1,0	500
7129MA92	40,0	M3	10,0	10,0	15,0	5,5	1,0	500
7130MA92	50,0	M3	10,0	10,0	15,0	5,5	1,0	500
7131MA92	60,0	M3	10,0	10,0	15,0	5,5	1,0	500
7132MA92	70,0	M3	10,0	10,0	15,0	5,5	1,0	500
7133MA92	80,0	M3	10,0	10,0	15,0	5,5	1,0	500