

SEPARADOR MÉTRICO HEXAGONAL MM M5 HEX 10.0



Descripción Técnica

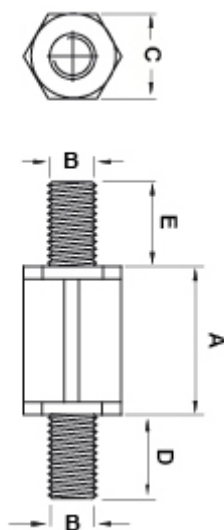
Material: PA66

Color: Negro

Autoextinguibilidad: UL94-HB

Temperatura de trabajo: -30°C ~ +150°C

Todas las medidas están indicadas en mm



Codigo	A	B	C	D	E	Conf./piezas
8169AA0103.0	3,0	M5	10,0	8,0	8,0	500
8169AA0104.0	4,0	M5	10,0	8,0	8,0	500
8169AA0105.0	5,0	M5	10,0	8,0	8,0	500
8169AA0106.0	6,0	M5	10,0	8,0	8,0	500

Codigo	A	B	C	D	E	Conf./piezas
8169AA0107.0	7,0	M5	10,0	8,0	8,0	500
8169AA0108.0	8,0	M5	10,0	8,0	8,0	500
8169AA0109.0	9,0	M5	10,0	8,0	8,0	500
8169AA0110.0	10,0	M5	10,0	8,0	8,0	500
8169AA0111.0	11,0	M5	10,0	8,0	8,0	500
8169AA0112.0	12,0	M5	10,0	8,0	8,0	500
8169AA0113.0	13,0	M5	10,0	8,0	8,0	500
8169AA0114.0	14,0	M5	10,0	8,0	8,0	500
8169AA0115.0	15,0	M5	10,0	8,0	8,0	500
8169AA0116.0	16,0	M5	10,0	8,0	8,0	500
8169AA0117.0	17,0	M5	10,0	8,0	8,0	500
8169AA0118.0	18,0	M5	10,0	8,0	8,0	500
8169AA0119.0	19,0	M5	10,0	8,0	8,0	500
8169AA0120.0	20,0	M5	10,0	8,0	8,0	500
8169AA0121.0	21,0	M5	10,0	8,0	8,0	500
8169AA0122.0	22,0	M5	10,0	8,0	8,0	500
8169AA0123.0	23,0	M5	10,0	8,0	8,0	500
8169AA0124.0	24,0	M5	10,0	8,0	8,0	500
8169AA0125.0	25,0	M5	10,0	8,0	8,0	500
8169AA0126.0	26,0	M5	10,0	8,0	8,0	500
8169AA0127.0	27,0	M5	10,0	8,0	8,0	500
8169AA0128.0	28,0	M5	10,0	8,0	8,0	500
8169AA0129.0	29,0	M5	10,0	8,0	8,0	500
8169AA0130.0	30,0	M5	10,0	8,0	8,0	500
8169AA0131.0	31,0	M5	10,0	8,0	8,0	500
8169AA0132.0	32,0	M5	10,0	8,0	8,0	500
8169AA0133.0	33,0	M5	10,0	8,0	8,0	500
8169AA0134.0	34,0	M5	10,0	8,0	8,0	500
8169AA0135.0	35,0	M5	10,0	8,0	8,0	500
8169AA0136.0	36,0	M5	10,0	8,0	8,0	500
8169AA0137.0	37,0	M5	10,0	8,0	8,0	500

Codigo	A	B	C	D	E	Conf./piezas
8169AA0138.0	38,0	M5	10,0	8,0	8,0	500
8169AA0139.0	39,0	M5	10,0	8,0	8,0	500
8169AA0140.0	40,0	M5	10,0	8,0	8,0	500
8169AA0141.0	41,0	M5	10,0	8,0	8,0	500
8169AA0142.0	42,0	M5	10,0	8,0	8,0	500
8169AA0143.0	43,0	M5	10,0	8,0	8,0	500
8169AA0144.0	44,0	M5	10,0	8,0	8,0	500
8169AA0145.0	45,0	M5	10,0	8,0	8,0	500
8169AA0146.0	46,0	M5	10,0	8,0	8,0	500
8169AA0147.0	47,0	M5	10,0	8,0	8,0	500
8169AA0148.0	48,0	M5	10,0	8,0	8,0	500
8169AA0149.0	49,0	M5	10,0	8,0	8,0	500
8169AA0150.0	50,0	M5	10,0	8,0	8,0	500
8169AA0151.0	51,0	M5	10,0	8,0	8,0	500
8169AA0152.0	52,0	M5	10,0	8,0	8,0	500
8169AA0153.0	53,0	M5	10,0	8,0	8,0	500
8169AA0154.0	54,0	M5	10,0	8,0	8,0	500
8169AA0155.0	55,0	M5	10,0	8,0	8,0	500
8169AA0156.0	56,0	M5	10,0	8,0	8,0	500
8169AA0157.0	57,0	M5	10,0	8,0	8,0	500
8169AA0158.0	58,0	M5	10,0	8,0	8,0	500
8169AA0159.0	59,0	M5	10,0	8,0	8,0	500
8169AA0160.0	60,0	M5	10,0	8,0	8,0	500
8169AA0161.0	61,0	M5	10,0	8,0	8,0	500
8169AA0162.0	62,0	M5	10,0	8,0	8,0	500
8169AA0163.0	63,0	M5	10,0	8,0	8,0	500
8169AA0164.0	64,0	M5	10,0	8,0	8,0	500
8169AA0165.0	65,0	M5	10,0	8,0	8,0	500