

SEPARADOR MÉTRICO HH HEXAGONAL M2



Descripción Técnica

Material: PA66

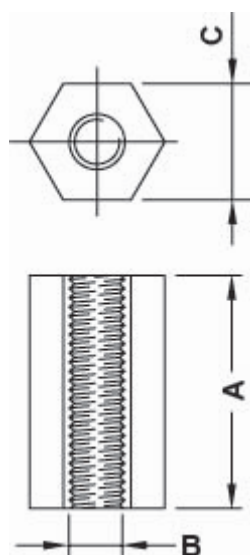
Color: Natural

- De A 4,0 a A 12,7 orificio pasante
- De A 13,0 en adelante el largo mínimo de la rosca es de 4,0

Autoextinguibilidad: UL94-V2

Temperatura de trabajo: -35°C ~ +85°C

Todas las medidas están indicadas en mm



Codigo	A	B	C	Conf./piezas
11456AA0004.0	4,0	M2	4,0	1.000
11456AA0004.5	4,5	M2	4,0	1.000

Codigo	A	B	C	Conf./piezas
11456AA0005.0	5,0	M2	4,0	1.000
11456AA0006.0	6,0	M2	4,0	1.000
11456AA0007.0	7,0	M2	4,0	1.000
11456AA0008.0	8,0	M2	4,0	1.000
11456AA0009.0	9,0	M2	4,0	1.000
11456AA0010.0	10,0	M2	4,0	1.000
11456AA0011.0	11,0	M2	4,0	1.000
11456AA0012.0	12,0	M2	4,0	1.000
11456AA0012.7	12,7	M2	4,0	1.000
11456AA0013.0	13,0	M2	4,0	1.000
11456AA0014.0	14,0	M2	4,0	1.000
11456AA0015.0	15,0	M2	4,0	1.000
11456AA0016.0	16,0	M2	4,0	1.000
11456AA0017.0	17,0	M2	4,0	1.000
11456AA0018.0	18,0	M2	4,0	1.000
11456AA0019.0	19,0	M2	4,0	1.000
11456AA0020.0	20,0	M2	4,0	1.000
11456AA0021.0	21,0	M2	4,0	1.000
11456AA0022.0	22,0	M2	4,0	1.000
11456AA0023.0	23,0	M2	4,0	1.000
11456AA0024.0	24,0	M2	4,0	1.000
11456AA0025.0	25,0	M2	4,0	1.000