

# SEPARADOR METÁLICO MH M2

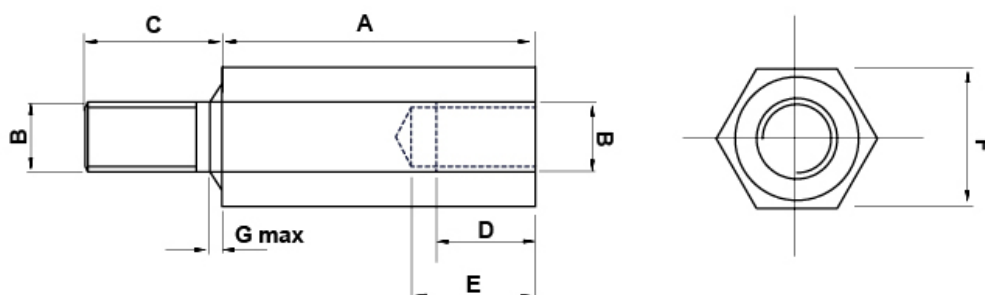


## Descripción Técnica

**Material:** Latón niquelado

Disponibile bajo petición en acero cincado

Todas las medidas están indicadas en mm



Codigo	A	B	C	D	E	F	G	Conf./piezas
7094MA92	5,0	M2	6,0	3,0	4,3	4,0	0,8	500
7095MA92	8,0	M2	6,0	4,0	6,5	4,0	0,8	500
7096MA92	10,0	M2	6,0	6,0	8,5	4,0	0,8	500
7097MA92	12,0	M2	6,0	8,0	10,0	4,0	0,8	500
7098MA92	15,0	M2	6,0	8,0	10,0	4,0	0,8	500
7099MA92	18,0	M2	6,0	8,0	13,0	4,0	0,8	500
7100MA92	20,0	M2	6,0	8,0	13,0	4,0	0,8	500
7101MA92	25,0	M2	6,0	8,0	13,0	4,0	0,8	500
7102MA92	30,0	M2	6,0	8,0	13,0	4,0	0,8	500
7103MA92	35,0	M2	6,0	8,0	13,0	4,0	0,8	500
7104MA92	40,0	M2	6,0	8,0	13,0	4,0	0,8	500