

# SEPARADOR CILÍNDRICO DI 1,0 A 18,2 / DE. 4,0 - 25,2



## Descripción Técnica

**Material:** PA6 + 25% FV

**Autoextinguibilidad:** UL94-HB

**Color:** Negro

**Temperatura de trabajo:** -35°C ~ +100°C

Alternativa:

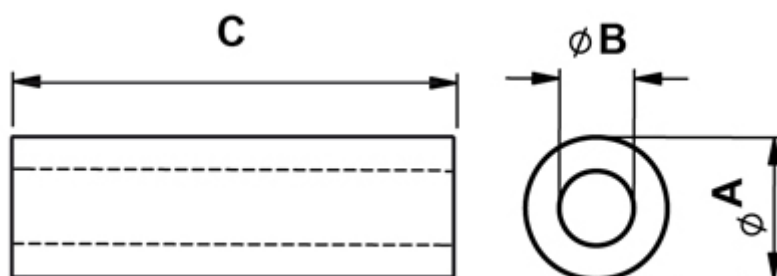
**Material:** Poliestireno

**Autoextinguibilidad:** UL94-HB

**Color:** Blanco

**Temperatura de trabajo:** -40°C ~ +70°C

Todas las medidas están indicadas en mm



Codigo	A	B	C	Conf./piezas
10099BB0102.0	6,0	4,5	2,0	500
10099BB0103.0	6,0	4,5	3,0	500

Codigo	A	B	C	Conf./piezas
10099BB0104.0	6,0	4,5	4,0	500
10099BB0105.0	6,0	4,5	5,0	500
10099BB0106.0	6,0	4,5	6,0	500
10099BB0107.0	6,0	4,5	7,0	500
10099BB0108.0	6,0	4,5	8,0	500
10099BB0109.0	6,0	4,5	9,0	500
10099BB0110.0	6,0	4,5	10,0	500
10099BB0111.0	6,0	4,5	11,0	500
10099BB0112.0	6,0	4,5	12,0	500
10099BB0113.0	6,0	4,5	13,0	500
10099BB0114.0	6,0	4,5	14,0	500
10099BB0115.0	6,0	4,5	15,0	500
10099BB0116.0	6,0	4,5	16,0	500
10099BB0117.0	6,0	4,5	17,0	500
10099BB0118.0	6,0	4,5	18,0	500
10099BB0119.0	6,0	4,5	19,0	500
10099BB0120.0	6,0	4,5	20,0	500
10099BB0121.0	6,0	4,5	21,0	500
10099BB0122.0	6,0	4,5	22,0	500
10099BB0123.0	6,0	4,5	23,0	500
10099BB0124.0	6,0	4,5	24,0	500
10099BB0125.0	6,0	4,5	25,0	500
10099BB0126.0	6,0	4,5	26,0	500
10099BB0127.0	6,0	4,5	27,0	500
10099BB0128.0	6,0	4,5	28,0	500
10099BB0129.0	6,0	4,5	29,0	500
10099BB0130.0	6,0	4,5	30,0	500
10099BB0131.0	6,0	4,5	31,0	500
10099BB0132.0	6,0	4,5	32,0	500
10099BB0133.0	6,0	4,5	33,0	500
10099BB0134.0	6,0	4,5	34,0	500

Codigo	A	B	C	Conf./piezas
10099BB0135.0	6,0	4,5	35,0	500
10099BB0136.0	6,0	4,5	36,0	500
10099BB0137.0	6,0	4,5	37,0	500
10099BB0138.0	6,0	4,5	38,0	500
10099BB0139.0	6,0	4,5	39,0	500
10099BB0140.0	6,0	4,5	40,0	500
10099BB0141.0	6,0	4,5	41,0	500
10099BB0142.0	6,0	4,5	42,0	500
10099BB0143.0	6,0	4,5	43,0	500
10099BB0144.0	6,0	4,5	44,0	500
10099BB0145.0	6,0	4,5	45,0	500
10099BB0146.0	6,0	4,5	46,0	500
10099BB0147.0	6,0	4,5	47,0	500
10099BB0148.0	6,0	4,5	48,0	500
10099BB0149.0	6,0	4,5	49,0	500
10099BB0150.0	6,0	4,5	50,0	500
10099BB0151.0	6,0	4,5	51,0	500
10099BB0152.0	6,0	4,5	52,0	500
10099BB0153.0	6,0	4,5	53,0	500
10099BB0154.0	6,0	4,5	54,0	500