

SEPARADOR AISLANTE MM EN M3 Y M4 POLIESTIRENO / ACERO



Descripción Técnica

Material: Poliestireno

Inserto roscado: Acero cincado

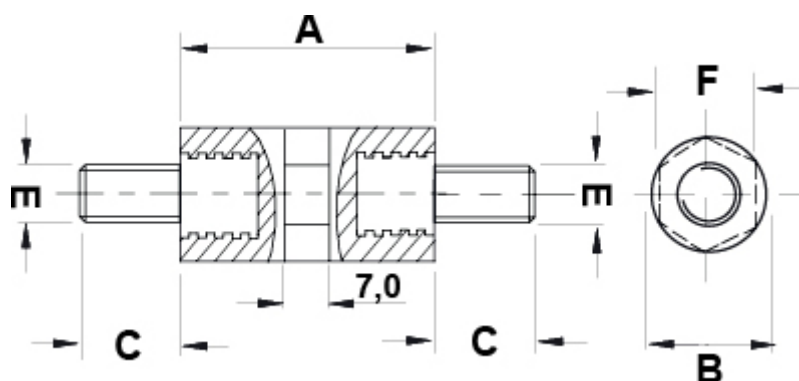
Color: Gris

Autoextinguibilidad: UL94-HB)

Temperatura de trabajo: -15°C ~ + 90°C

Rigidez dieléctrica: 50kV

Todas las medidas están indicadas en mm



Codigo	A	B	C	D	E	F	Type	Conf./piezas
10482DA1115.0	15,0	7,0	7,0	-	M3	6,0	2	100
10482DA1120.0	20,0	7,0	7,0	-	M3	6,0	2	100
10482DA1125.0	25,0	7,0	7,0	-	M3	6,0	2	100
10482DA1130.0	30,0	7,0	7,0	-	M3	6,0	2	100

Codigo	A	B	C	D	E	F	Type	Conf./piezas
10482DA1140.0	40,0	7,0	7,0	-	M3	6,0	2	100
10485DA1115.0	15,0	10,0	7,0	-	M4	9,0	2	100
10485DA1120.0	20,0	10,0	7,0	-	M4	9,0	2	100
10485DA1125.0	25,0	10,0	7,0	-	M4	9,0	2	100
10485DA1130.0	30,0	10,0	7,0	-	M4	9,0	2	100
10485DA1140.0	40,0	10,0	7,0	-	M4	9,0	2	100
10485DA1150.0	50,0	10,0	7,0	-	M4	9,0	2	100