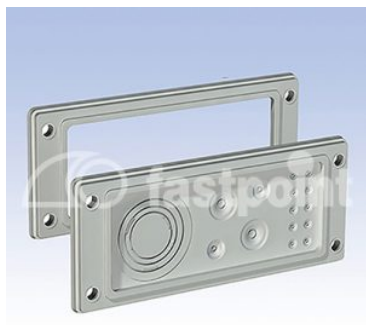


PLACA MODULAR IP65 - INSERTOS



Descripción Técnica

Material: PP + Fibra de vidrio y TPE sin halógenos

Grado de protección: IP65

Color: Gris (RAL 7035) y Negro (RAL 9005)

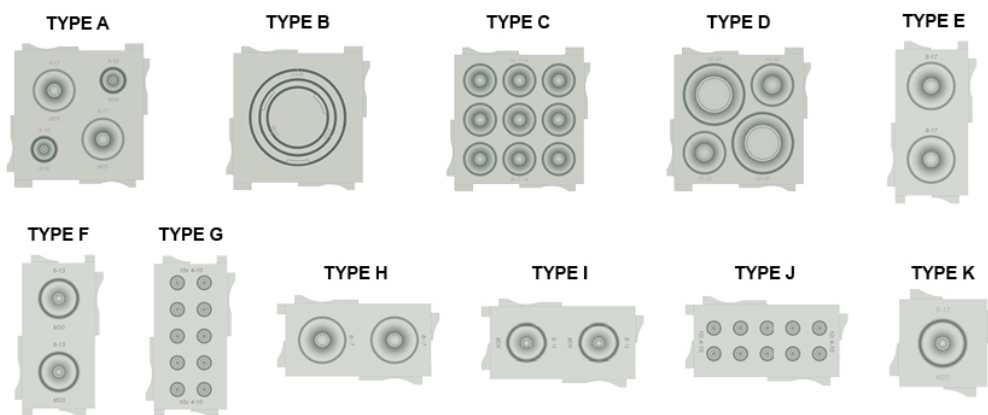
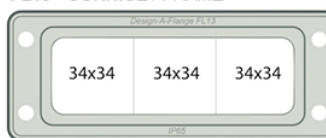
Test standard: EN 60529:1991+A1, en 60670-1:2005

Conforme a la norma **SEMKO**

FL21 - CORNICE / FRAME



FL13 - CORNICE / FRAME



Codigo	Color	Cornice	Inserto	Dimensione inserto	No. Orificios / ØCable	Conf./piezas
9060FA019005	RAL 9005	FL 21	A	68 X 68	2 (M25) / 8-17, 2 (M16) 5-10	10
9060FA117035	RAL 7035	FL 21	A	68 X 68	2 (M25) / 8-17, 2 (M16) 5-10	10

Codigo	Color	Cornice	Inserto	Dimensione inserto	No. Orificios / ØCable	Conf./piezas
9061FA019005	RAL 9005	FL 21	B	68 X 68	1 (M32, M40, M50)	10
9061FA117035	RAL 7035	FL 21	B	68 X 68	1 (M32, M40, M50)	10
9062FA019005	RAL 9005	FL 21	C	68 X 68	9 / 7-14	10
9062FA117035	RAL 7035	FL 21	C	68 X 68	9 / 7-14	10
9063FA019005	RAL 9005	FL 21	D	68 X 68	2 / 20-30, 2 /10-20	10
9063FA117035	RAL 7035	FL 21	D	68 X 68	2 / 20-30, 2 /10-20	10
9065FA019005	RAL 9005	FL 21	E	68 X 34	2(M25) / 8-17	10
9065FA117035	RAL 7035	FL 21	E	68 X 34	2(M25) / 8-17	10
9066FA019005	RAL 9005	FL 21	F	68 X 34	2(M20) / 6-13	10
9066FA117035	RAL 7035	FL 21	F	68 X 34	2(M20) / 6-13	10
9067FA019005	RAL 9005	FL 21	G	68 X 34	10 / 4-10	10
9067FA117035	RAL 7035	FL 21	G	68 X 34	10 / 4-10	10
9068FA019005	RAL 9005	FL 13	H	34 X 68	2(M25) / 8-17	10
9068FA117035	RAL 7035	FL 13	H	34 X 68	2(M25) / 8-17	10
9069FA019005	RAL 9005	FL 13	I	34 X 68	2(M20) / 6-13	10
9069FA117035	RAL 7035	FL 13	I	34 X 68	2(M20) / 6-13	10
9070FA019005	RAL 9005	FL 13	J	34 X 68	10 / 4-10	10
9070FA117035	RAL 7035	FL 13	J	34 X 68	10 / 4-10	10
9071FA019005	RAL 9005	FL 13	K	34 X 34	1(M20) / 6-13	10
9071FA117035	RAL 7035	FL 13	K	34 X 34	1(M20) / 6-13	10