

## PATA CON REMACHE



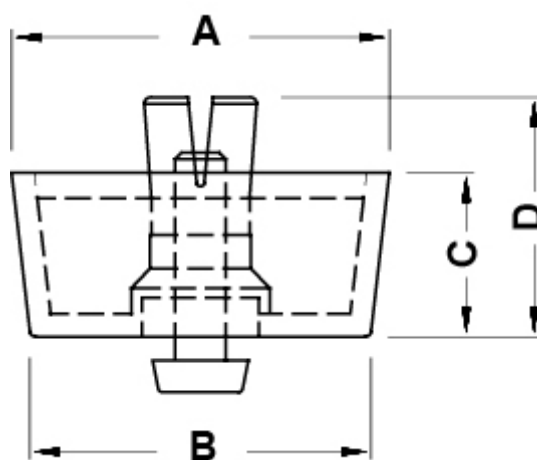
### Descrizione Técnica

**Material Cuerpo:** PE

**Material Remache:** PP

**Color:** Negro

Todas las medidas están indicadas en mm



| Codigo   | A    | B    | C    | D    | Orificio | Espesor   | Notas                    | Conf./piezas |
|----------|------|------|------|------|----------|-----------|--------------------------|--------------|
| 5732EA01 | 12,7 | 12,0 | 4,4  | 8,5  | Ø 5,0    | 1,0 - 2,0 | Disponibile anche in TPR | 1.000        |
| 5735EA01 | 22,0 | 21,0 | 3,5  | 10,5 | Ø 8,0    | 1,0 - 3,0 | 500                      |              |
| 5736EA01 | 20,0 | 18,6 | 4,0  | 7,0  | Ø 8,0    | 1,0 - 2,0 | 500                      |              |
| 5737EA01 | 19,5 | 18,7 | 5,0  | 10,5 | Ø 8,0    | 0,8 - 2,0 | 500                      |              |
| 5738EA01 | 23,0 | 21,0 | 8,0  | 13,3 | Ø 8,0    | 0,8 - 2,0 | 250                      |              |
| 5740EA01 | 24,0 | 20,0 | 10,5 | 15,8 | Ø 8,0    | 0,8 - 2,0 | 250                      |              |
| 6239EA01 | 20,0 | 19,3 | 20,5 | 25,6 | Ø 8,0    | 0,8 - 2,0 | 250                      |              |

| Codigo   | A    | B    | C    | D    | Orificio | Espesor   | Notas                    | Conf./piezas |
|----------|------|------|------|------|----------|-----------|--------------------------|--------------|
| 6272EA01 | 23,7 | 19,5 | 13,7 | 19,2 | Ø 8,0    | 1,0 - 2,5 | 250                      |              |
| 6638EA01 | 20,8 | 19,8 | 6,4  | 11,8 | Ø 8,0    | 1,0 - 2,5 | 500                      |              |
| 6639EA01 | 20,0 | 18,0 | 10,0 | 15,4 | Ø 8,0    | 1,0 - 2,5 | Disponibile anche in TPR | 500          |
| 6640EA01 | 25,0 | 23,5 | 6,5  | 12,5 | Ø 8,0    | 1,0 - 2,5 | Disponibile anche in TPR | 500          |
| 6641EA01 | 30,0 | 27,7 | 12,8 | 18,8 | Ø 8,0    | 1,0 - 2,5 | 200                      |              |
| 6642EA01 | 28,5 | 26,5 | 8,2  | 14,0 | Ø 10,0   | 1,0 - 3,5 | 250                      |              |
| 6643EA01 | 15,7 | 15,0 | 4,4  | 8,5  | Ø 5,0    | 1,0 - 2,0 | Disponibile anche in TPR | 1.000        |
| 6644EA01 | 23,8 | 22,0 | 5,0  | 10,0 | Ø 8,0    | 1,0 - 2,5 | 500                      |              |
| 6645EA01 | 31,5 | 28,5 | 7,8  | 13,6 | Ø 10,0   | 1,0 - 3,5 | 250                      |              |
| 6646EA01 | 20,0 | 18,0 | 15,0 | 20,8 | Ø 8,0    | 1,0 - 3,0 | Disponibile anche in TPR | 250          |
| 6647EA01 | 20,0 | 18,0 | 18,0 | 24,3 | Ø 8,0    | 0,8 - 1,0 | Disponibile anche in TPR | 250          |
| 6648EA01 | 29,4 | 26,5 | 15,0 | 23,0 | Ø 10,0   | 1,0 - 3,5 | Disponibile anche in TPR | 200          |
| 6649EA01 | 19,2 | 17,2 | 7,9  | 12,1 | Ø 8,0    | 0,8 - 1,2 | Disponibile anche in TPR | 500          |
| 6650EA01 | 26,7 | 24,8 | 16,0 | 21,0 | Ø 8,0    | 1,0 - 3,0 | 250                      |              |
| 6651EA01 | 20,0 | 18,0 | 10,0 | 13,5 | Ø 8,0    | 0,8 - 2,0 | 250                      |              |
| 6652EA01 | 27,0 | 26,0 | 6,9  | 12,0 | Ø 10,0   | 0,8 - 2,0 | 250                      |              |
| 6653EA01 | 14,0 | 12,7 | 5,8  | 10,6 | Ø 6,0    | 1,0 - 2,5 | 1.000                    |              |
| 6654EA01 | 22,0 | 20,0 | 3,5  | 10,5 | Ø 8,0    | 1,0 - 3,0 | 500                      |              |