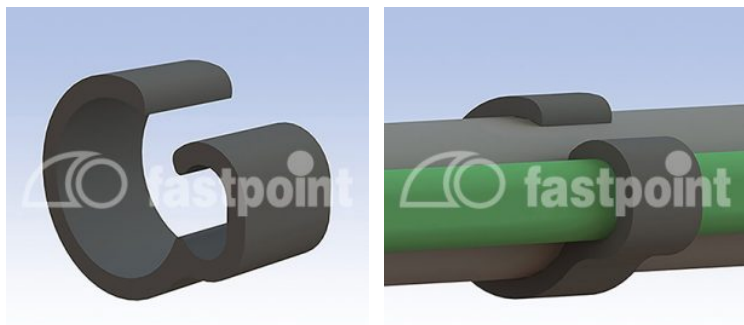


PASACABLES DE DOBLE ALOJAMIENTO



Descripción Técnica

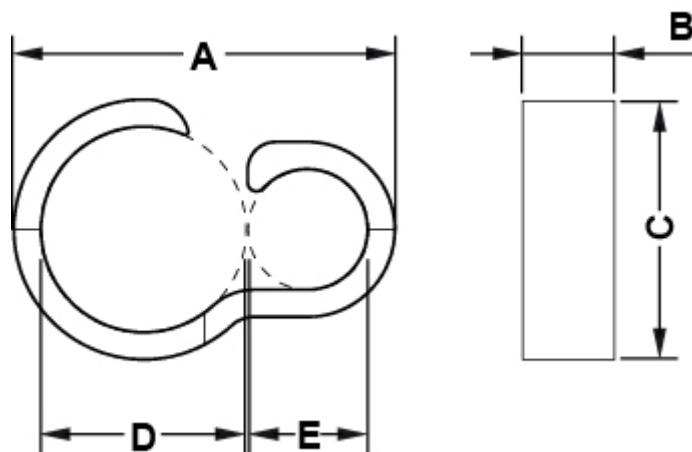
Material: Véase tabla

Color: Natural o Negro

Autoextinguibilidad: UL94-V2

Temperatura de trabajo: -35°C ~ +85°C

Todas las medidas están indicadas en mm



Codigo	A	B	C	D	E	Material	Conf./piezas
1081AA01	19,0	8,0	11,5	9,0	7,0	PA 6.6	1.000
1082AA01	22,5	8,0	15,0	12,0	7,0	PA 6.6	1.000
1083AA01	25,5	8,0	18,0	15,0	7,0	PA 6.6	1.000
3287AB01	13,5	8,0	9,5	7,0	6X4	PA 6.6 20% CV	1.000
3288AB01	15,5	8,0	11,5	9,0	6X4	PA 6.6 20% CV	1.000
3289AB01	19,0	9,0	15,0	12,0	6X4	PA 6.6 20% CV	1.000

Codigo	A	B	C	D	E	Material	Conf./piezas
3290BB01	22,0	9,0	18,2	15,0	6X4	PA 6.6 25% CV	1.000
3291BB01	25,0	10,0	21,6	18,0	6X4	PA 6.6 25% CV	1.000