

CIERRE METÁLICO MACHO-HEMBRA



Descripción Técnica

Material: Acero bruñido / Acero cincado

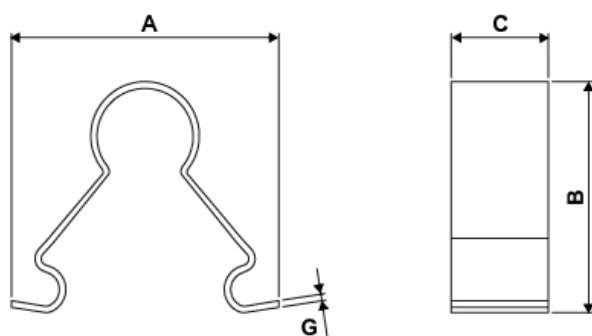
Dimensión en chapa sugerida: 8.0 x 11.0 mm

Grosor de chapa: 1.0 - 1,2 mm

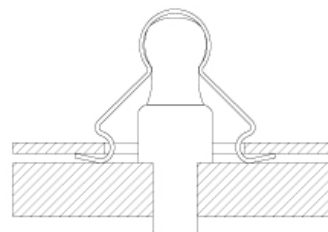
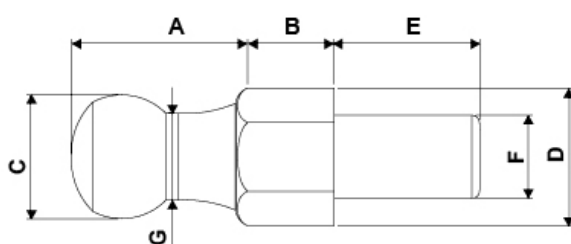
Para una mayor sujeción se sugiere un dimensionamiento en la chapa ligeramente inferior

Todas las medidas están indicadas en mm

TYPE 1F



TYPE 2M



| Codigo | A | B | C | D | E | F | G | Material | Type | Conf./piezas |
|----------|------|------|-----|---|---|---|-----|-----------------|------|--------------|
| 4474MC90 | 18,0 | 14,0 | 6,0 | - | - | - | 0,4 | Burnished steel | 1 | 2.500 |

| Codigo | A | B | C | D | E | F | G | Material | Type | Conf./piezas |
|----------|------|------|-----|-----|-----|----|-----|------------------|------|--------------|
| 4486MC90 | 16,5 | 14,0 | 6,0 | - | - | - | 0,4 | Burnished steel | 1 | 2.500 |
| 4488MF94 | 8,0 | 4,8 | 5,6 | 6,0 | 7,2 | M4 | 4,5 | Zinc-plated iron | 2 | 2.500 |
| 5995MF94 | 8,0 | 5,0 | 5,6 | 6,0 | 7,0 | M5 | 4,5 | Zinc-plated iron | 2 | 2.500 |