

ARANDELA DIN 34815 (DIN 125)



Descripción Técnica

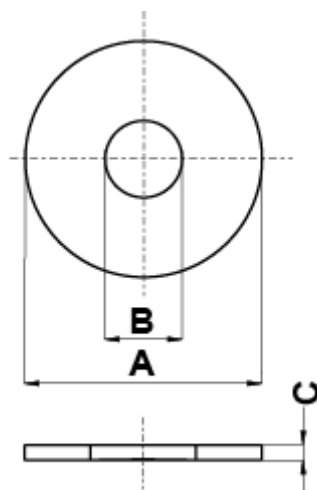
Material: PA6

Color: Natural

Norma de referencia: DIN 34815 (antes DIN 125)

Temperatura de trabajo: -30°C ~ +100°C

Todas las medidas están indicadas en mm



Codigo	A	B	C	M	Conf./piezas
10446AA00	5,0	2,2	0,3	M 2	5.000
10447AA00	6,0	2,5	0,5	M 2,3	5.000
10448AA00	6,0	2,7	0,5	M 2,5	5.000
10449AA00	6,5	2,7	0,5	M 2,5	5.000
10450AA00	7,0	3,2	0,5	M 3	5.000

Codigo	A	B	C	M	Conf./piezas
10451AA00	8,0	3,7	0,5	M 3,5	1.000
10452AA00	9,0	4,3	0,8	M 4	5.000
10453AA00	10,0	5,3	1,0	M5	5.000
10454AA00	12,0	6,4	1,6	M 6	5.000
10455AA00	14,0	7,4	1,6	M 7	5.000
10456AA00	16,0	8,4	1,6	M 8	5.000
10457AA00	20,0	10,5	2,0	M 10	1.000
10458AA00	24,0	13,0	2,5	M 12	1.000
10459AA00	28,0	15,0	2,5	M 14	1.000
10460AA00	30,0	17,0	3,0	M 16	1.000
10461AA00	34,0	19,0	3,0	M 18	1.000
10462AA00	37,0	21,0	3,0	M 20	1.000
10463AA00	39,0	23,0	3,0	M 22	1.000
10464AA00	44,0	25,0	4,0	M 24	1.000
10465AA00	50,0	27,0	4,0	M 26	1.000
10466AA00	50,0	28,0	4,0	M 27	1.000
10467AA00	50,0	29,0	4,0	M 28	1.000