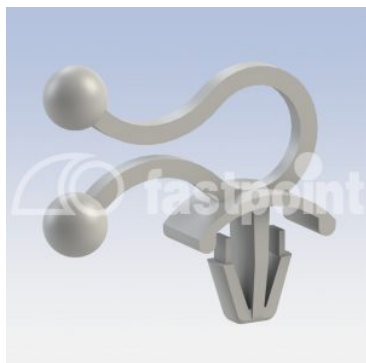


TWIST LOCK PUSH MOUNT SIDE OPENING



Technical description

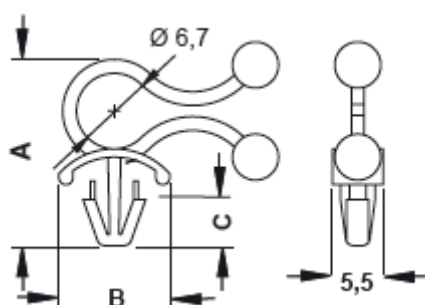
Material: PA 6.6

Colour: Natural

UL Flammability: V2 (UL 94)

Operating temperature: -35°C ~ +85°C

All dimensions are in mm.



Code	A	B	C	D	E	Mounting hole	Thickness	MOQ-Pcs
10708AA00	20,2	12,0	5,0	5,5	Ø 6,7	Ø 4,0	1,6 - 4,0	1.000
10709AA00	16,9	12,0	3,5	5,5	Ø 6,7	Ø 3,0	0,8 - 2,0	1.000