

THREADED PIN DIN EN ISO 24766 (EX DIN 551)



Technical description

Material: PA 6

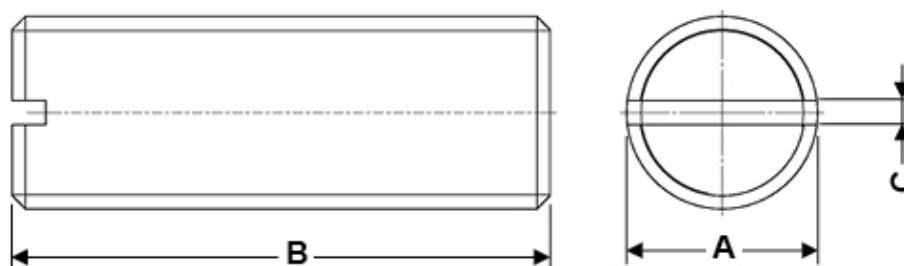
Colour : Natural

estimate according: DIN EN ISO 24766

Operating temperature:

-30°C ~ + max. 100°C

All dimensions are in mm.



Code	A	B	C	MOQ-Pcs
10331AA0008.0	M 3	8,0	0,5	1.000
10331AA0011.0	M 3	11,0	0,5	1.000
10331AA0016.0	M 3	16,0	0,5	1.000
10331AA0019.0	M 3	19,0	0,5	1.000
10331AA0021.0	M 3	21,0	0,5	1.000
10331AA0026.0	M 3	26,0	0,5	1.000
10331AA0031.0	M 3	31,0	0,5	1.000
10331AA0034.0	M 3	34,0	0,5	1.000
10331AA0035.0	M 3	35,0	0,5	1.000

Code	A	B	C	MOQ-Pcs
10331AA0010.0	M 3	10,0	0,5	1.000
10332AA0016.0	M 4	16,0	0,7	1.000
10332AA0030.0	M 4	30,0	0,7	1.000
10332AA0025.0	M 4	25,0	0,7	1.000
10332AA0019.0	M 4	19,0	0,7	1.000
10332AA0021.0	M 4	21,0	0,7	1.000
10332AA0012.0	M 4	12,0	0,7	1.000
10332AA0010.0	M 4	10,0	0,7	1.000
10332AA0004.0	M 4	4,0	0,7	1.000
10332AA0008.0	M 4	8,0	0,7	1.000
10332AA0006.0	M 4	6,0	0,7	1.000
10333AA0031.0	M 5	31,0	0,9	1.000
10333AA0026.0	M 5	26,0	0,9	1.000
10333AA0021.0	M 5	21,0	0,9	1.000
10333AA0018.0	M 5	18,0	0,9	1.000
10333AA0016.0	M 5	16,0	0,9	1.000
10333AA0012.0	M 5	12,0	0,9	1.000
10333AA0010.0	M 5	10,0	0,9	1.000
10333AA0008.0	M 5	8,0	0,9	1.000
10333AA0006.0	M 5	6,0	0,9	1.000
10333AA0005.0	M 5	5,0	0,9	1.000
10334AA0030.0	M 6	30,0	1,2	1.000
10334AA0026.0	M 6	26,0	1,2	1.000
10334AA0022.0	M 6	22,0	1,2	1.000
10334AA0018.0	M 6	18,0	1,2	1.000
10334AA0020.0	M 6	20,0	1,2	1.000
10334AA0010.0	M 6	10,0	1,2	1.000
10334AA0016.0	M 6	16,0	1,2	1.000
10334AA0008.0	M 6	8,0	1,2	1.000
10334AA0006.0	M 6	6,0	1,2	1.000
10334AA0005.0	M 6	5,0	1,2	1.000

Code	A	B	C	MOQ-Pcs
10334AA0012.0	M 6	12,0	1,2	1.000
10335AA0016.0	M 8	16,0	1,3	1.000
10335AA0022.0	M 8	22,0	1,3	1.000
10335AA0020.0	M 8	20,0	1,3	1.000
10335AA0018.0	M 8	18,0	1,3	1.000
10335AA0026.0	M 8	26,0	1,3	1.000
10335AA0014.0	M 8	14,0	1,3	1.000
10335AA0012.0	M 8	12,0	1,3	1.000
10335AA0010.0	M 8	10,0	1,3	1.000
10335AA0008.0	M 8	8,0	1,3	1.000
10335AA0006.0	M 8	6,0	1,3	1.000
10335AA0005.0	M 8	5,0	1,3	1.000
10336AA0026.0	M10	26,0	1,6	1.000
10336AA0022.0	M10	22,0	1,6	1.000
10336AA0020.0	M10	20,0	1,6	1.000
10336AA0016.0	M10	16,0	1,6	1.000
10336AA0012.0	M10	12,0	1,6	1.000
10336AA0014.0	M10	14,0	1,6	1.000
10336AA0010.0	M10	10,0	1,6	1.000
10336AA0008.0	M10	8,0	1,6	1.000
10336AA0006.0	M10	6,0	1,6	1.000
10336AA0005.0	M10	5,0	1,6	1.000
10337AA0010.0	M12	10,0	2,0	1.000
10337AA0012.0	M12	12,0	2,0	1.000
10337AA0016.0	M12	16,0	2,0	1.000
10337AA0021.0	M12	21,0	2,0	1.000
10337AA0025.0	M12	25,0	2,0	1.000