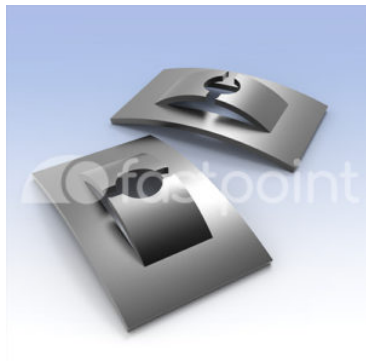


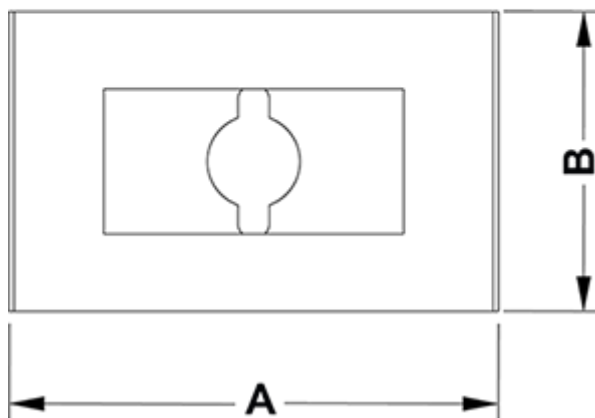
PUSHNUTS



Technical description

Material: spring steel

All dimensions are in mm.



Code	A	B	C	Screw	MOQ-Pcs
1504MC90	21,0	13,0	0,5	7P	5.000
1505MC90	15,0	9,4	0,6	8P	5.000
3729MC90	15,0	9,4	0,5	6P	5.000
4382MC90	15,0	9,4	0,5	4P	5.000