

## PUSH-IN LOCK RIVETS



### Technical description

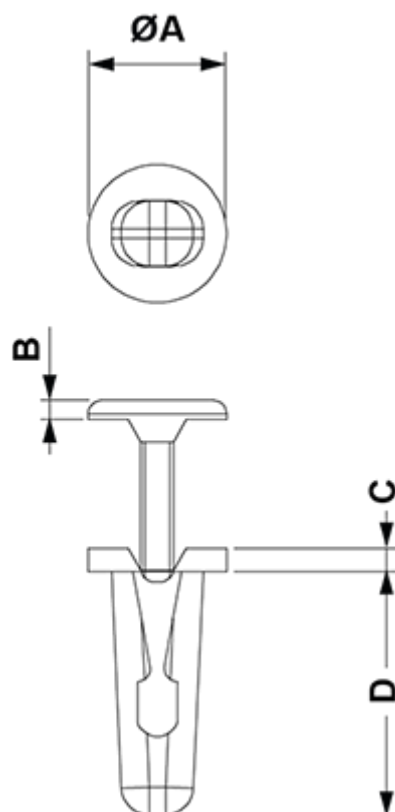
**Material:** PA 6.6

**Colour:** Black or natural

**Flammability:** V2 (UL 94)

**Working temperature:** -35°C ~ + 85°C

All dimensions are in mm



Code	A	B	C	D	Mounting hole	Thickness	Colour	MOQ-Pcs
0467AA01	10,0	1,6	1,6	14,5	Ø 6 - 6,5	1,0 - 4,0	Nero o naturale	1.000