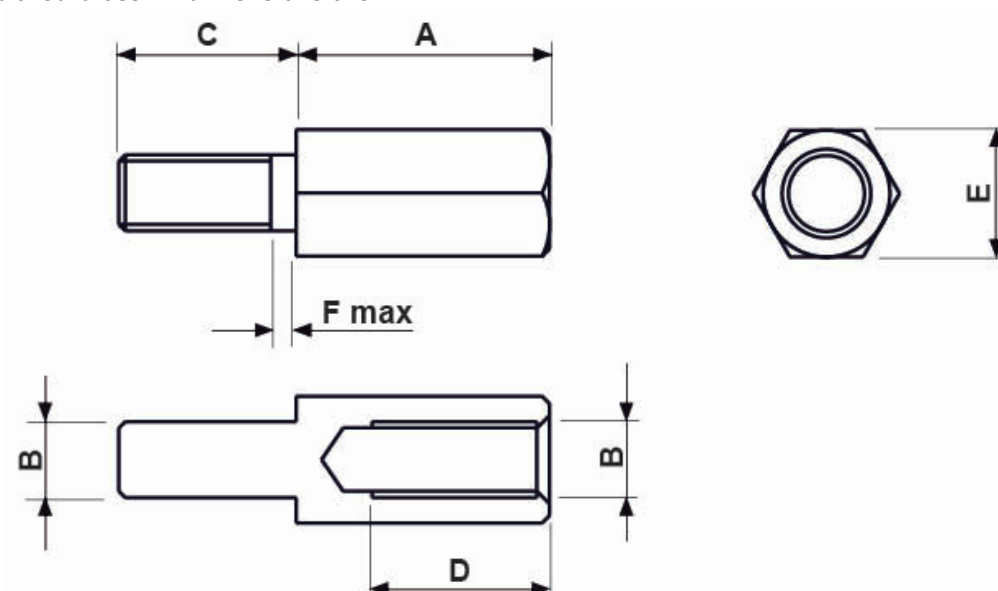


NICKEL-PLATED BRASS THREADED P.C.B SPACER M4



Technical description

Material: Nickel-plated brass All dimensions are in mm



| Code | A | B | C | D | E | F | MOQ-Pcs |
|----------|------|----|-----|-----|-----|-----|---------|
| 7572MA92 | 5,0 | M4 | 6,0 | 4,0 | 6,0 | 1,0 | 500 |
| 7575MA92 | 8,0 | M4 | 6,0 | 6,0 | 6,0 | 1,0 | 500 |
| 7562MA92 | 10,0 | M4 | 6,0 | 6,0 | 6,0 | 1,0 | 500 |
| 7563MA92 | 12,0 | M4 | 6,0 | 6,0 | 6,0 | 1,0 | 500 |
| 7564MA92 | 15,0 | M4 | 6,0 | 6,0 | 6,0 | 1,0 | 500 |
| 7565MA92 | 18,0 | M4 | 6,0 | 6,0 | 6,0 | 1,0 | 500 |
| 7566MA92 | 20,0 | M4 | 6,0 | 6,0 | 6,0 | 1,0 | 500 |
| 7567MA92 | 25,0 | M4 | 6,0 | 6,0 | 6,0 | 1,0 | 500 |
| 7568MA92 | 30,0 | M4 | 6,0 | 6,0 | 6,0 | 1,0 | 500 |
| 7569MA92 | 35,0 | M4 | 6,0 | 6,0 | 6,0 | 1,0 | 500 |

| Code | A | B | C | D | E | F | MOQ-Pcs |
|----------|------|----|-----|-----|-----|-----|---------|
| 7570MA92 | 40,0 | M4 | 6,0 | 6,0 | 6,0 | 1,0 | 500 |
| 7571MA92 | 45,0 | M4 | 6,0 | 6,0 | 6,0 | 1,0 | 500 |
| 7573MA92 | 50,0 | M4 | 6,0 | 6,0 | 6,0 | 1,0 | 500 |
| 7574MA92 | 60,0 | M4 | 6,0 | 6,0 | 6,0 | 1,0 | 500 |