

METRIC M2,5 M/M HEXAGONAL 5,0 SPACERS



Technical description

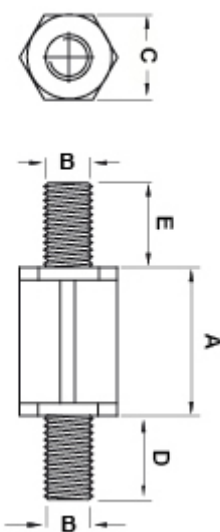
Material: PA 6.6

Colour: Black

UL Flammability: HB (UL 94)

Operating temperature: -30°C ~ +150°C

All dimensions are in mm.



Code	A	B	C	D	E	MOQ-Pcs
8164AA0103.0	3,0	M2,5	5,0	6,0	6,0	500
8164AA0104.0	4,0	M2,5	5,0	6,0	6,0	500
8164AA0105.0	5,0	M2,5	5,0	6,0	6,0	500
8164AA0106.0	6,0	M2,5	5,0	6,0	6,0	500
8164AA0107.0	7,0	M2,5	5,0	6,0	6,0	500

Code	A	B	C	D	E	MOQ-Pcs
8164AA0108.0	8,0	M2,5	5,0	6,0	6,0	500
8164AA0109.0	9,0	M2,5	5,0	6,0	6,0	500
8164AA0110.0	10,0	M2,5	5,0	6,0	6,0	500
8164AA0111.0	11,0	M2,5	5,0	6,0	6,0	500
8164AA0112.0	12,0	M2,5	5,0	6,0	6,0	500
8164AA0113.0	13,0	M2,5	5,0	6,0	6,0	500
8164AA0114.0	14,0	M2,5	5,0	6,0	6,0	500
8164AA0115.0	15,0	M2,5	5,0	6,0	6,0	500
8164AA0116.0	16,0	M2,5	5,0	6,0	6,0	500
8164AA0117.0	17,0	M2,5	5,0	6,0	6,0	500
8164AA0118.0	18,0	M2,5	5,0	6,0	6,0	500
8164AA0119.0	19,0	M2,5	5,0	6,0	6,0	500
8164AA0120.0	20,0	M2,5	5,0	6,0	6,0	500
8164AA0121.0	21,0	M2,5	5,0	6,0	6,0	500
8164AA0122.0	22,0	M2,5	5,0	6,0	6,0	500
8164AA0123.0	23,0	M2,5	5,0	6,0	6,0	500
8164AA0124.0	24,0	M2,5	5,0	6,0	6,0	500
8164AA0125.0	25,0	M2,5	5,0	6,0	6,0	500
8164AA0126.0	26,0	M2,5	5,0	6,0	6,0	500
8164AA0127.0	27,0	M2,5	5,0	6,0	6,0	500
8164AA0128.0	28,0	M2,5	5,0	6,0	6,0	500
8164AA0129.0	29,0	M2,5	5,0	6,0	6,0	500
8164AA0130.0	30,0	M2,5	5,0	6,0	6,0	500
8164AA0131.0	31,0	M2,5	5,0	6,0	6,0	500
8164AA0132.0	32,0	M2,5	5,0	6,0	6,0	500
8164AA0133.0	33,0	M2,5	5,0	6,0	6,0	500
8164AA0134.0	34,0	M2,5	5,0	6,0	6,0	500
8164AA0135.0	35,0	M2,5	5,0	6,0	6,0	500
8164AA0136.0	36,0	M2,5	5,0	6,0	6,0	500
8164AA0137.0	37,0	M2,5	5,0	6,0	6,0	500
8164AA0138.0	38,0	M2,5	5,0	6,0	6,0	500

Code	A	B	C	D	E	MOQ-Pcs
8164AA0139.0	39,0	M2,5	5,0	6,0	6,0	500
8164AA0140.0	40,0	M2,5	5,0	6,0	6,0	500
8164AA0141.0	41,0	M2,5	5,0	6,0	6,0	500
8164AA0142.0	42,0	M2,5	5,0	6,0	6,0	500
8164AA0143.0	43,0	M2,5	5,0	6,0	6,0	500
8164AA0144.0	44,0	M2,5	5,0	6,0	6,0	500
8164AA0145.0	45,0	M2,5	5,0	6,0	6,0	500
8164AA0146.0	46,0	M2,5	5,0	6,0	6,0	500
8164AA0147.0	47,0	M2,5	5,0	6,0	6,0	500
8164AA0148.0	48,0	M2,5	5,0	6,0	6,0	500
8164AA0149.0	49,0	M2,5	5,0	6,0	6,0	500
8164AA0150.0	50,0	M2,5	5,0	6,0	6,0	500
8164AA0151.0	51,0	M2,5	5,0	6,0	6,0	500
8164AA0152.0	52,0	M2,5	5,0	6,0	6,0	500
8164AA0153.0	53,0	M2,5	5,0	6,0	6,0	500
8164AA0154.0	54,0	M2,5	5,0	6,0	6,0	500
8164AA0155.0	55,0	M2,5	5,0	6,0	6,0	500
8164AA0156.0	56,0	M2,5	5,0	6,0	6,0	500
8164AA0157.0	57,0	M2,5	5,0	6,0	6,0	500
8164AA0158.0	58,0	M2,5	5,0	6,0	6,0	500
8164AA0159.0	59,0	M2,5	5,0	6,0	6,0	500
8164AA0160.0	60,0	M2,5	5,0	6,0	6,0	500
8164AA0161.0	61,0	M2,5	5,0	6,0	6,0	500
8164AA0162.0	62,0	M2,5	5,0	6,0	6,0	500
8164AA0163.0	63,0	M2,5	5,0	6,0	6,0	500
8164AA0164.0	64,0	M2,5	5,0	6,0	6,0	500
8164AA0165.0	65,0	M2,5	5,0	6,0	6,0	500