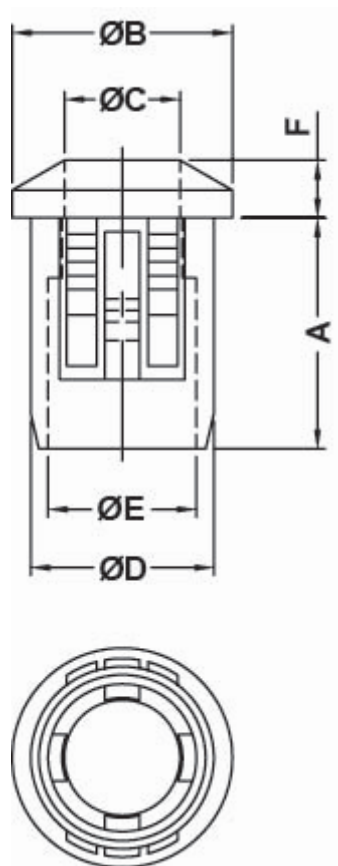


## LED SUPPORTS



### Technical description

**Material:** PA 6.6 **Colour:** Black **Flammability:** V2 (UL94) **Working temperature:** -35°C ~ +85°C All dimensions are in mm



Code	A	B	C	D	E	F	Mounting hole	Thickness	MOQ-Pcs
5919AA01	10,0	9,5	4,9	7,9	6,4	2,5	Ø 8,0	1,2 - 3,0	1.000