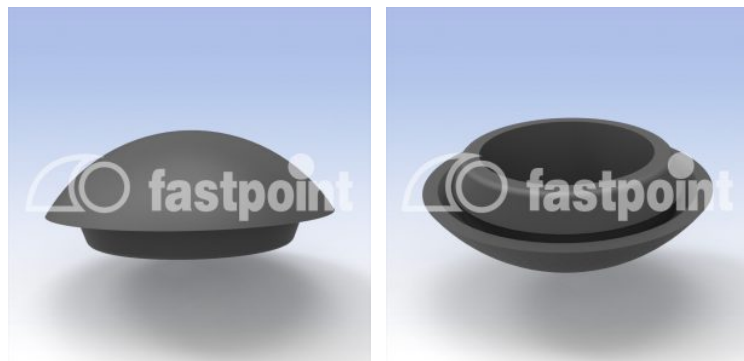


## HOLE PLUGS | HOLE Ø12,7 - 34,9



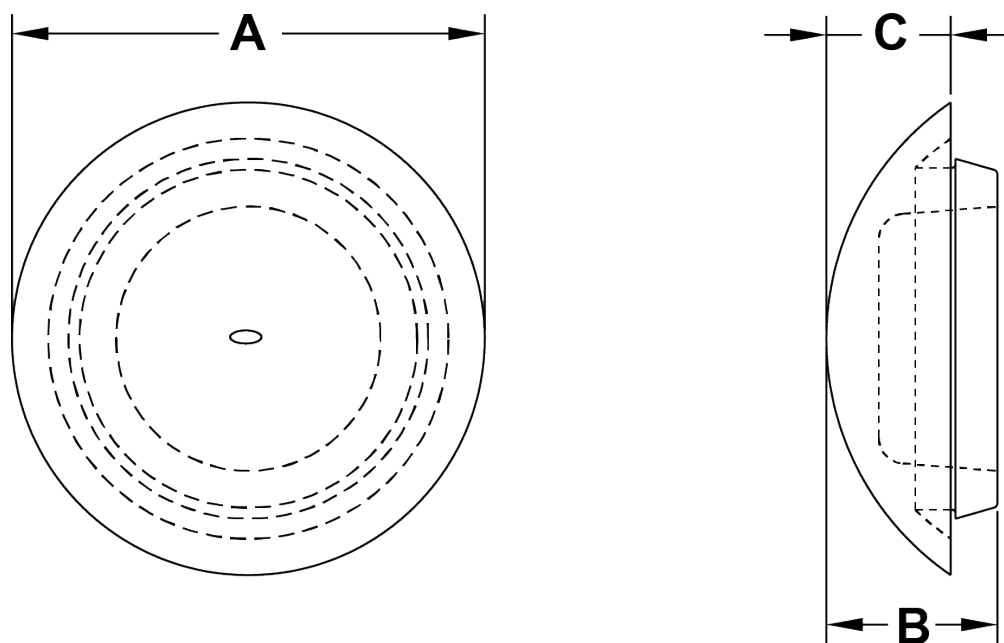
### Technical description

**Material:** TPE 85 Shore A

**Colour:** Black

**Working temperature:** -60°C ~ +135°C

**All dimensions are in mm**



Code	A	B	C	Mounting hole	Thickness	MOQ-Pcs
22620PF01	23,1	11,4	7,4	12,7	3,2 mm	2.500
22621PF01	26,2	11,9	7,9	15,9	3,2 mm	2.500
22622PF01	29,2	13,0	8,9	19,1	3,2 mm	1.500
22623PF01	32,5	13,5	9,1	22,2	3,2 mm	2.500

Code	A	B	C	Mounting hole	Thickness	MOQ-Pcs
22624PF01	35,8	14,2	10,2	25,4	3,2 mm	1.000
22625PF01	38,6	14,0	10,2	27,8	3,2 mm	1.500
22626PF01	45,2	14,5	10,7	34,9	3,2 mm	1.000