

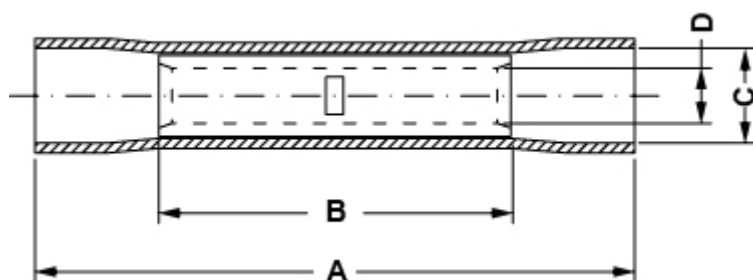
HEAT SHRINKABLE INSULATED BUTT CONNECTORS



Technical description

Terminal material: CU-ETP 99.9% tin-plated copper Isolation: PE HD Colour: See table Rated voltage: 300V max.

Working temperature: -10 ^ 105°C max. All dimensions are in mm



Code	A	B	C	D	Size	Colour	MOQ-Pcs
16565EB04	36,0	15,0	4,4	1,7	0,5 - 1,5	Rosso - Red - Rot	100
16566EB08	36,0	15,0	5,2	2,3	1,5 - 2,5	Blu / Blue / Blau	100
16567EB06	41,0	15,0	6,5	3,6	1,5 - 2,5	Giallo - Yellow - Gelb	100