

FEET AND PUSH-IN BUMPERS



Technical description

Material: PVC

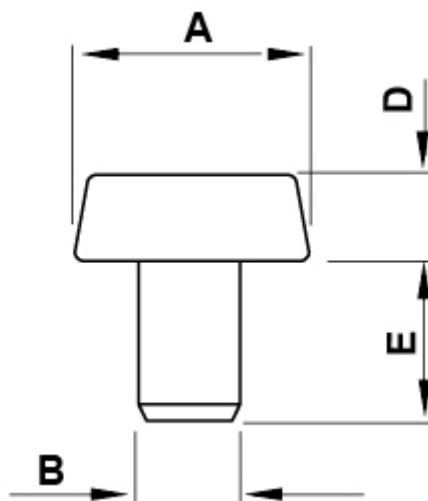
Operating temperature: -25°C ~ +60°C

Material: LD - PE

Operating temperature: -30°C ~ +60°C

Colour: Black

All dimensions are in mm.



Code	A	B	C	D	E	Material	MOQ-Pcs
0433CA01	15x10	6,0	-	10,0	7,0	PVC Morbido / Soft PVC	2.500
0433EA01	15x10	6,0	10,0	7,0	PE-LD	2.500	
0434FA01	16,0	6,0	11,0	12,0	POLYPROPYLENE	2.500	
0435CA01	12,0	6,0	2,5	9,0	PVC morbido / Soft PVC	2.500	

Code	A	B	C	D	E	Material	MOQ-Pcs
0435EA01	12,0	6,0	2,5	9,0	PE-LD	2.500	
0436CA01	12,0	6,0	3,8	9,0	PVC morbido / Soft PVC	2.500	
0436EA01	12,0	6,0	3,8	9,0	PE-LD	2.500	
0437CA01	7,0	3,5	1,5	5,0	PVC morbido / Soft PVC	2.500	
0437EA01	7,0	3,5	1,5	5,0	PE-LD	2.500	
3597EA01	5,0	3,0	4,0	4,0	PE-LD	1.000	