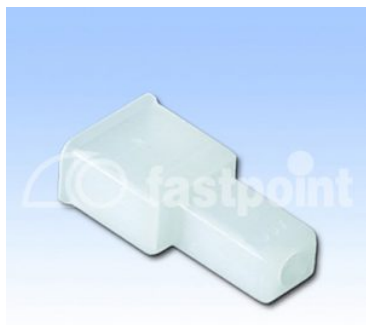


# CAPS



## Technical description

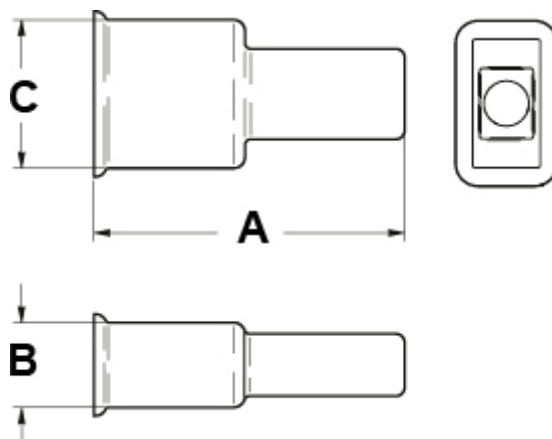
**Colour:** Natural

**UL Flammability:** V2 (UL 94)

**Material:** PA 6.6

**D =** Width of groove terminal

All dimensions are in mm.



Code	A	B	C	D	Notes	MOQ-Pcs
1867AA00	22,0	6,0	10,5	6,3	Per terminale femmina	5.000