

# BLANKING PLUG



RAL 7035



RAL 9005

## Technical description

**Material:** PA 6 30% GF

**Working temperature:**

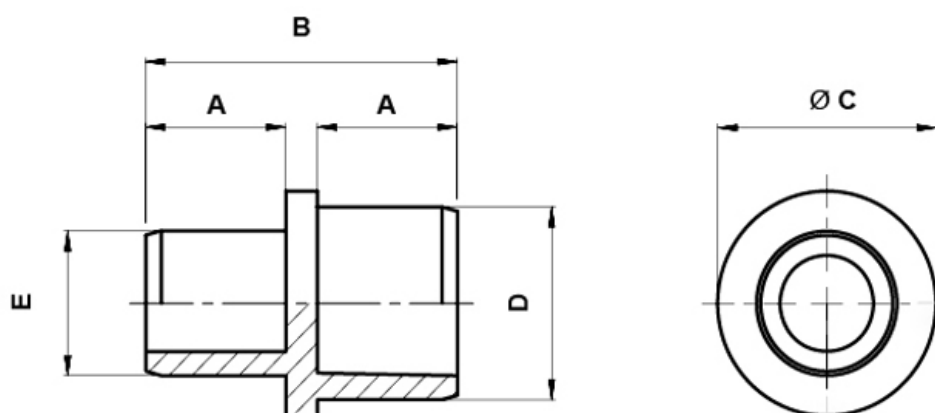
-30°C ~ +100° C

**UL Flammability :** HB (UL94)

**Colour:** See table

**Colour:** RAL 7001 available by special request

All dimensions are in mm.



Code	A	B	C	D	E	Colour	MOQ-Pcs
8897BB117035	6,0	14,0	8,5	6,5	5,0	RAL 7035	50

Code	A	B	C	D	E	Colour	MOQ-Pcs
8898BB019005	6,0	14,0	8,5	6,5	5,0	RAL 9005	50
8898BB117035	7,0	16,0	10,0	8,0	6,0	RAL 7035	50
8899BB019005	7,0	16,0	10,0	8,0	6,0	RAL 9005	50
8899BB117035	8,0	18,0	12,0	10,0	7,0	RAL 7035	50
8900BB019005	8,0	18,0	12,0	10,0	7,0	RAL 9005	50
8900BB117035	9,0	20,0	14,0	12,0	9,0	RAL 7035	50
8901BB117035	10,0	22,5	16,0	14,0	12,0	RAL 7035	50
8902BB117035	12,0	26,5	20,0	18,0	16,0	RAL 7035	25
8903BB117035	14,0	30,5	28,0	25,0	20,0	RAL 7035	10