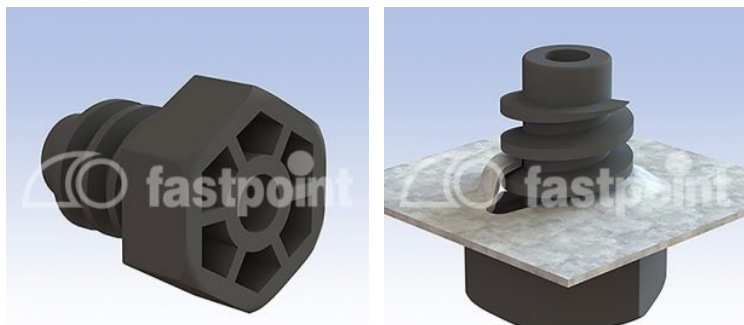


ADJUSTABLE LEVELLING FEET



Technical description

Material: See table

Operating temperature:

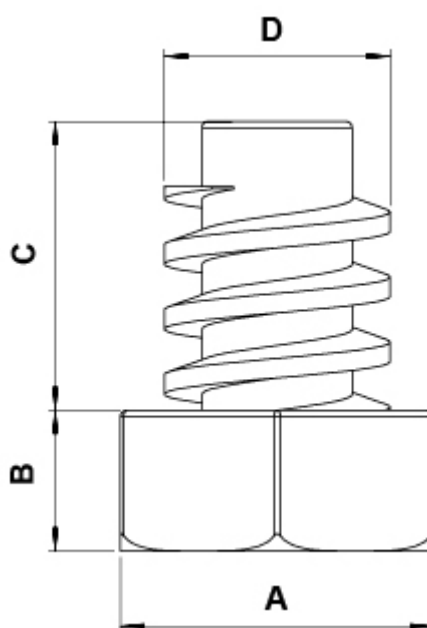
-PE: -25°C ~ +60°C

-PA 6.6: -30°C ~ + 85°C

Colour: Black

All dimensions are in mm.

Request panel hole drawn



Code	A	B	C	D	Material	MOQ-Pcs
0089AA01	24,0	17,0	22,0	Ø 17,8	Materiale PA 66	1.000

Code	A	B	C	D	Material	MOQ-Pcs
12057EA01	24,0	5,0	22,5	Ø 17,8	Polyetylen (PE - LD)	1.000