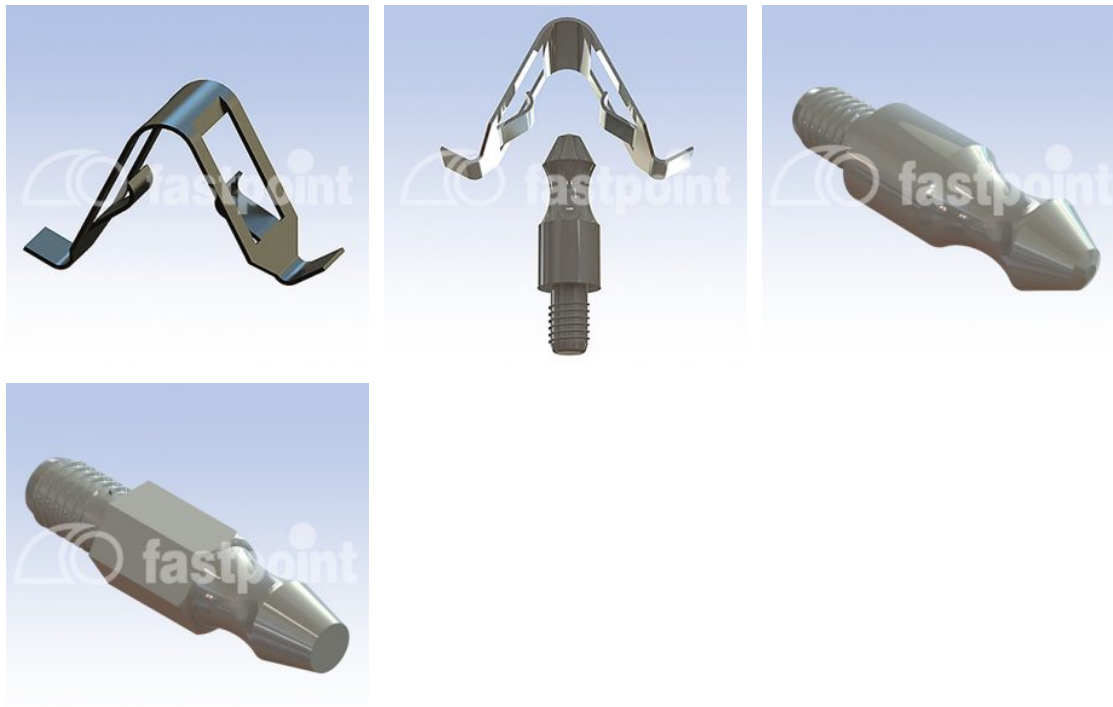


SCHNAPPVERSCHLUSS / METALL



Technische Beschreibung

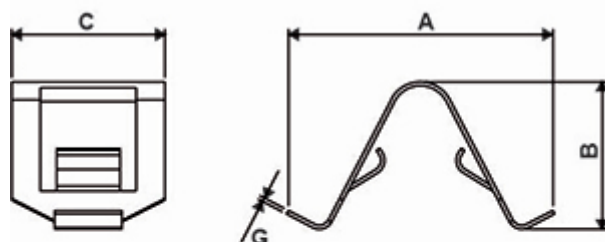
Material: Siehe Tabelle
Ausstanzung zur Aufnahme der Klammer

8 x 13 mm.

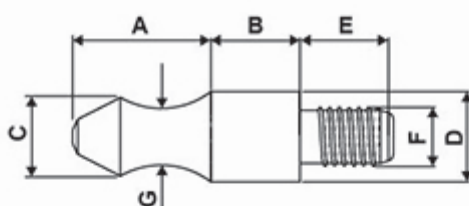
Stärke: 0,8 - 1,2 mm.

**Alle Maße in mm*

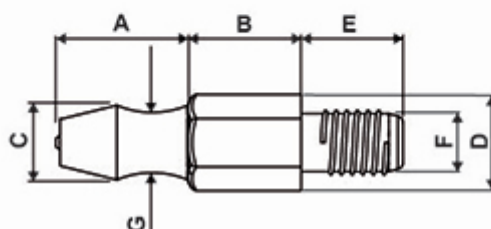
TYPE 1 FEMMINA / FEMALE



TYPE 2 MASCHIO / MALE



TYPE 3 MASCHIO / MALE



Artikel	A	B	C	D	E	F	G	Material	Type	VPE-Stckz.
0970MC90	28,3	14,5	16,0	-	-	-	0,35	Acciaio per molle	1	2.500
0972MC90	28,3	14,5	16,0	-	-	-	0,55	Acciaio per molle	1	2.500
2930MF94	11,1	6,9	5,9	7,0	7,0	M5	4,4	Ferro zincato	2	2.500
2935MF94	9,2	7,8	5,5	6,0	7,0	M4	4,3	Ferro zincato	3	2.500