

ABSTANDSBOLZEN INNEN/INNENGEWINDE M6/M6 - Ø 10,0



Technische Beschreibung

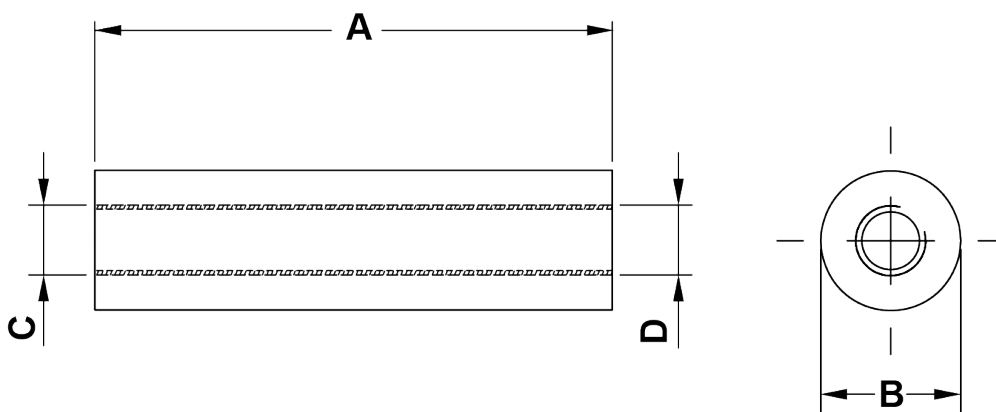
Material: PA 6, 25% GV

Entflammbarkeit: HB (UL94)

Temperaturbereich: -35°C ~ +110°C

Farbe: Schwarz

*Alle Maße in mm



| Artikel | A | B | C | D | VPE-Stckz. |
|---------------|-----|--------|----|----|------------|
| 10047BB0104.0 | 4,0 | Ø 10,0 | M6 | M6 | 500 |
| 10047BB0105.0 | 5,0 | Ø 10,0 | M6 | M6 | 500 |
| 10047BB0106.0 | 6,0 | Ø 10,0 | M6 | M6 | 500 |
| 10047BB0107.0 | 7,0 | Ø 10,0 | M6 | M6 | 500 |
| 10047BB0108.0 | 8,0 | Ø 10,0 | M6 | M6 | 500 |
| 10047BB0109.0 | 9,0 | Ø 10,0 | M6 | M6 | 500 |

| Artikel | A | B | C | D | VPE-Stckz. |
|---------------|------|--------|----|----|------------|
| 10047BB0110.0 | 10,0 | Ø 10,0 | M6 | M6 | 500 |
| 10047BB0111.0 | 11,0 | Ø 10,0 | M6 | M6 | 500 |
| 10047BB0112.0 | 12,0 | Ø 10,0 | M6 | M6 | 500 |
| 10047BB0113.0 | 13,0 | Ø 10,0 | M6 | M6 | 500 |
| 10047BB0114.0 | 14,0 | Ø 10,0 | M6 | M6 | 500 |
| 10047BB0115.0 | 15,0 | Ø 10,0 | M6 | M6 | 500 |
| 10047BB0116.0 | 16,0 | Ø 10,0 | M6 | M6 | 500 |
| 10047BB0117.0 | 17,0 | Ø 10,0 | M6 | M6 | 500 |
| 10047BB0118.0 | 18,0 | Ø 10,0 | M6 | M6 | 500 |
| 10047BB0119.0 | 19,0 | Ø 10,0 | M6 | M6 | 500 |
| 10047BB0120.0 | 20,0 | Ø 10,0 | M6 | M6 | 500 |