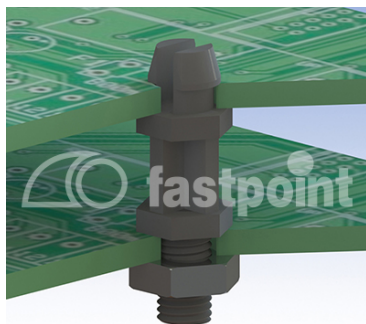


ABSTANDSHALTER SCHNAPPBAR BOHRUNG 3,0 – LP STÄRKE 1,7 / AUSSENGEWINDE M2,5



Technische Beschreibung

Material: PA 6.6

Entflammbarkeit: HB (UL 94)

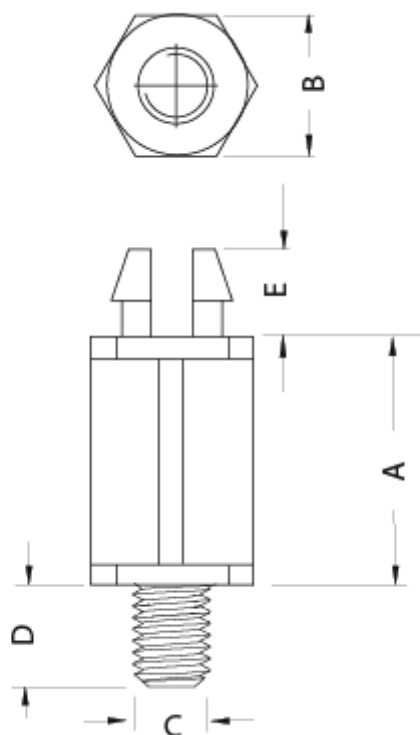
Temperaturbereich: -30° ~ +130°C

Farbe: Schwarz

Lieferbare Höhen in Stufen von je 1 mm – Sonderhöhen auf Anfrage.

Bei Bestellung des Artikels, bitte die gewünschte Länge am Ende der Artikelbezeichnung hinzufügen (z.B.: 8204AA0108,0 für h = 8,0 mm)

Alle Maße in mm



Artikel	A	B	C	D	E	Bohrung	Stärke	VPE-Stckz.
8204AA0103.0	3,0	6,0	M2,5	6,0	3,6	Ø 3,0	1,7	500
8204AA0104.0	4,0	6,0	M2,5	6,0	3,6	Ø 3,0	1,7	500
8204AA0105.0	5,0	6,0	M2,5	6,0	3,6	Ø 3,0	1,7	500
8204AA0106.0	6,0	6,0	M2,5	6,0	3,6	Ø 3,0	1,7	500
8204AA0107.0	7,0	6,0	M2,5	6,0	3,6	Ø 3,0	1,7	500
8204AA0108.0	8,0	6,0	M2,5	6,0	3,6	Ø 3,0	1,7	500
8204AA0109.0	9,0	6,0	M2,5	6,0	3,6	Ø 3,0	1,7	500
8204AA0110.0	10,0	6,0	M2,5	6,0	3,6	Ø 3,0	1,7	500
8204AA0111.0	11,0	6,0	M2,5	6,0	3,6	Ø 3,0	1,7	500
8204AA0112.0	12,0	6,0	M2,5	6,0	3,6	Ø 3,0	1,7	500
8204AA0113.0	13,0	6,0	M2,5	6,0	3,6	Ø 3,0	1,7	500
8204AA0114.0	14,0	6,0	M2,5	6,0	3,6	Ø 3,0	1,7	500
8204AA0115.0	15,0	6,0	M2,5	6,0	3,6	Ø 3,0	1,7	500
8204AA0116.0	16,0	6,0	M2,5	6,0	3,6	Ø 3,0	1,7	500
8204AA0117.0	17,0	6,0	M2,5	6,0	3,6	Ø 3,0	1,7	500

Artikel	A	B	C	D	E	Bohrung	Stärke	VPE-Stckz.
8204AA0118.0	18,0	6,0	M2,5	6,0	3,6	Ø 3,0	1,7	500
8204AA0119.0	19,0	6,0	M2,5	6,0	3,6	Ø 3,0	1,7	500
8204AA0120.0	20,0	6,0	M2,5	6,0	3,6	Ø 3,0	1,7	500
8204AA0121.0	21,0	6,0	M2,5	6,0	3,6	Ø 3,0	1,7	500
8204AA0122.0	22,0	6,0	M2,5	6,0	3,6	Ø 3,0	1,7	500
8204AA0123.0	23,0	6,0	M2,5	6,0	3,6	Ø 3,0	1,7	500
8204AA0124.0	24,0	6,0	M2,5	6,0	3,6	Ø 3,0	1,7	500
8204AA0125.0	25,0	6,0	M2,5	6,0	3,6	Ø 3,0	1,7	500
8204AA0126.0	26,0	6,0	M2,5	6,0	3,6	Ø 3,0	1,7	500
8204AA0127.0	27,0	6,0	M2,5	6,0	3,6	Ø 3,0	1,7	500
8204AA0128.0	28,0	6,0	M2,5	6,0	3,6	Ø 3,0	1,7	500
8204AA0129.0	29,0	6,0	M2,5	6,0	3,6	Ø 3,0	1,7	500
8204AA0130.0	30,0	6,0	M2,5	6,0	3,6	Ø 3,0	1,7	500
8204AA0131.0	31,0	6,0	M2,5	6,0	3,6	Ø 3,0	1,7	500
8204AA0132.0	32,0	6,0	M2,5	6,0	3,6	Ø 3,0	1,7	500
8204AA0133.0	33,0	6,0	M2,5	6,0	3,6	Ø 3,0	1,7	500
8204AA0134.0	34,0	6,0	M2,5	6,0	3,6	Ø 3,0	1,7	500
8204AA0135.0	35,0	6,0	M2,5	6,0	3,6	Ø 3,0	1,7	500
8204AA0136.0	36,0	6,0	M2,5	6,0	3,6	Ø 3,0	1,7	500
8204AA0137.0	37,0	6,0	M2,5	6,0	3,6	Ø 3,0	1,7	500
8204AA0138.0	38,0	6,0	M2,5	6,0	3,6	Ø 3,0	1,7	500
8204AA0139.0	39,0	6,0	M2,5	6,0	3,6	Ø 3,0	1,7	500
8204AA0140.0	40,0	6,0	M2,5	6,0	3,6	Ø 3,0	1,7	500
8204AA0141.0	41,0	6,0	M2,5	6,0	3,6	Ø 3,0	1,7	500
8204AA0142.0	42,0	6,0	M2,5	6,0	3,6	Ø 3,0	1,7	500
8204AA0143.0	43,0	6,0	M2,5	6,0	3,6	Ø 3,0	1,7	500
8204AA0144.0	44,0	6,0	M2,5	6,0	3,6	Ø 3,0	1,7	500
8204AA0145.0	45,0	6,0	M2,5	6,0	3,6	Ø 3,0	1,7	500
8204AA0146.0	46,0	6,0	M2,5	6,0	3,6	Ø 3,0	1,7	500
8204AA0147.0	47,0	6,0	M2,5	6,0	3,6	Ø 3,0	1,7	500
8204AA0148.0	48,0	6,0	M2,5	6,0	3,6	Ø 3,0	1,7	500

Artikel	A	B	C	D	E	Bohrung	Stärke	VPE-Stckz.
8204AA0149.0	49,0	6,0	M2,5	6,0	3,6	Ø 3,0	1,7	500
8204AA0150.0	50,0	6,0	M2,5	6,0	3,6	Ø 3,0	1,7	500
8204AA0151.0	51,0	6,0	M2,5	6,0	3,6	Ø 3,0	1,7	500
8204AA0152.0	52,0	6,0	M2,5	6,0	3,6	Ø 3,0	1,7	500
8204AA0153.0	53,0	6,0	M2,5	6,0	3,6	Ø 3,0	1,7	500
8204AA0154.0	54,0	6,0	M2,5	6,0	3,6	Ø 3,0	1,7	500
8204AA0155.0	55,0	6,0	M2,5	6,0	3,6	Ø 3,0	1,7	500
8204AA0156.0	56,0	6,0	M2,5	6,0	3,6	Ø 3,0	1,7	500
8204AA0157.0	57,0	6,0	M2,5	6,0	3,6	Ø 3,0	1,7	500
8204AA0158.0	58,0	6,0	M2,5	6,0	3,6	Ø 3,0	1,7	500
8204AA0159.0	59,0	6,0	M2,5	6,0	3,6	Ø 3,0	1,7	500
8204AA0160.0	60,0	6,0	M2,5	6,0	3,6	Ø 3,0	1,7	500
8204AA0161.0	61,0	6,0	M2,5	6,0	3,6	Ø 3,0	1,7	500
8204AA0162.0	62,0	6,0	M2,5	6,0	3,6	Ø 3,0	1,7	500
8204AA0163.0	63,0	6,0	M2,5	6,0	3,6	Ø 3,0	1,7	500
8204AA0164.0	64,0	6,0	M2,5	6,0	3,6	Ø 3,0	1,7	500
8204AA0165.0	65,0	6,0	M2,5	6,0	3,6	Ø 3,0	1,7	500