

ABSTANDSHALTER MIT AUßEN/ AUßENGEWINDE M3 / SW 8,0



Technische Beschreibung

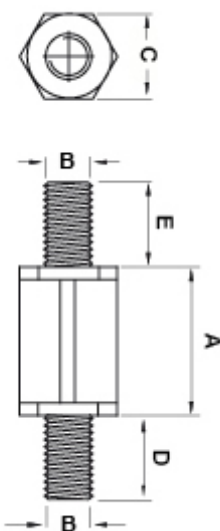
Material: PA 6.6

Farbe: schwarz

Entflammbarkeit: HB (UL 94)

Temperaturbereich: -30°C bis +150°C

Alle Maße sind in mm



Artikel	A	B	C	D	E	VPE-Stckz.
8166AA0103.0	3,0	M3	8,0	6,0	6,0	500
8166AA0104.0	4,0	M3	8,0	6,0	6,0	500
8166AA0105.0	5,0	M3	8,0	6,0	6,0	500
8166AA0106.0	6,0	M3	8,0	6,0	6,0	500

Artikel	A	B	C	D	E	VPE-Stckz.
8166AA0107.0	7,0	M3	8,0	6,0	6,0	500
8166AA0108.0	8,0	M3	8,0	6,0	6,0	500
8166AA0109.0	9,0	M3	8,0	6,0	6,0	500
8166AA0110.0	10,0	M3	8,0	6,0	6,0	500
8166AA0111.0	11,0	M3	8,0	6,0	6,0	500
8166AA0112.0	12,0	M3	8,0	6,0	6,0	500
8166AA0113.0	13,0	M3	8,0	6,0	6,0	500
8166AA0114.0	14,0	M3	8,0	6,0	6,0	500
8166AA0115.0	15,0	M3	8,0	6,0	6,0	500
8166AA0116.0	16,0	M3	8,0	6,0	6,0	500
8166AA0117.0	17,0	M3	8,0	6,0	6,0	500
8166AA0118.0	18,0	M3	8,0	6,0	6,0	500
8166AA0119.0	19,0	M3	8,0	6,0	6,0	500
8166AA0120.0	20,0	M3	8,0	6,0	6,0	500
8166AA0121.0	21,0	M3	8,0	6,0	6,0	500
8166AA0122.0	22,0	M3	8,0	6,0	6,0	500
8166AA0123.0	23,0	M3	8,0	6,0	6,0	500
8166AA0124.0	24,0	M3	8,0	6,0	6,0	500
8166AA0125.0	25,0	M3	8,0	6,0	6,0	500
8166AA0126.0	26,0	M3	8,0	6,0	6,0	500
8166AA0127.0	27,0	M3	8,0	6,0	6,0	500
8166AA0128.0	28,0	M3	8,0	6,0	6,0	500
8166AA0129.0	29,0	M3	8,0	6,0	6,0	500
8166AA0130.0	30,0	M3	8,0	6,0	6,0	500
8166AA0131.0	31,0	M3	8,0	6,0	6,0	500
8166AA0132.0	32,0	M3	8,0	6,0	6,0	500
8166AA0133.0	33,0	M3	8,0	6,0	6,0	500
8166AA0134.0	34,0	M3	8,0	6,0	6,0	500
8166AA0135.0	35,0	M3	8,0	6,0	6,0	500
8166AA0136.0	36,0	M3	8,0	6,0	6,0	500
8166AA0137.0	37,0	M3	8,0	6,0	6,0	500

Artikel	A	B	C	D	E	VPE-Stckz.
8166AA0138.0	38,0	M3	8,0	6,0	6,0	500
8166AA0139.0	39,0	M3	8,0	6,0	6,0	500
8166AA0140.0	40,0	M3	8,0	6,0	6,0	500
8166AA0141.0	41,0	M3	8,0	6,0	6,0	500
8166AA0142.0	42,0	M3	8,0	6,0	6,0	500
8166AA0143.0	43,0	M3	8,0	6,0	6,0	500
8166AA0144.0	44,0	M3	8,0	6,0	6,0	500
8166AA0145.0	45,0	M3	8,0	6,0	6,0	500
8166AA0146.0	46,0	M3	8,0	6,0	6,0	500
8166AA0147.0	47,0	M3	8,0	6,0	6,0	500
8166AA0148.0	48,0	M3	8,0	6,0	6,0	500
8166AA0149.0	49,0	M3	8,0	6,0	6,0	500
8166AA0150.0	50,0	M3	8,0	6,0	6,0	500
8166AA0151.0	51,0	M3	8,0	6,0	6,0	500
8166AA0152.0	52,0	M3	8,0	6,0	6,0	500
8166AA0153.0	53,0	M3	8,0	6,0	6,0	500
8166AA0154.0	54,0	M3	8,0	6,0	6,0	500
8166AA0155.0	55,0	M3	8,0	6,0	6,0	500
8166AA0156.0	56,0	M3	8,0	6,0	6,0	500
8166AA0157.0	57,0	M3	8,0	6,0	6,0	500
8166AA0158.0	58,0	M3	8,0	6,0	6,0	500
8166AA0159.0	59,0	M3	8,0	6,0	6,0	500
8166AA0160.0	60,0	M3	8,0	6,0	6,0	500
8166AA0161.0	61,0	M3	8,0	6,0	6,0	500
8166AA0162.0	62,0	M3	8,0	6,0	6,0	500
8166AA0163.0	63,0	M3	8,0	6,0	6,0	500
8166AA0164.0	64,0	M3	8,0	6,0	6,0	500
8166AA0165.0	65,0	M3	8,0	6,0	6,0	500